

# MEADOW MUFFIN

ISSUE  
**01**  
FALL  
2013

Quarterly Newsletter of the National Association of Competitive Mounted Orienteering



**WE'RE BACK!**

After a long hiatus, the Meadow Muffin is back with an updated look, and lots of great new features.

## CHANGING OF THE GUARD

A personal letter from outgoing NACMO President, Alison Bennett.

**Hello fellow CMO'ers!**

I write this column with both gratitude and melancholy.

Let's imagine it's the year 2000. I was fresh off the Welsh show circuit, and had won every National title in the show world. I needed something fun and exciting to do with my extremely well versed Welsh Pony, Alamo. One weekend my Aunt Jeanne took me out on a trail ride at the Ionia Recreation Area. She gave me this weird compass thing and she told me we were going to find places in the woods to hide plates. Believe me at 21 years old I thought this sounded like the most ridiculous idea I had ever heard of. I just wanted to run (well, extended trot - most Welsh Ponies can trot faster than some big Quarter Horses canter!) down the trail smiling with the wind blowing through Alamo and I's ears! So anyway I entertained the idea and my aunt kept laughing saying, you gotta try this sport I think you and Alamo would do really well as fast as you guys go! I remember laugh-

ing to myself saying, no this is stupid.

Let's fast forward to 2001. Yankee Springs Recreation Area. I attended a CMO put on by my Aunt Jeanne. Some pretty crazy things happened that weekend I was there. People pranking each other in the middle of the night. Everyone put their horses in these weird portable corral things or better yet tying them to ropes above their heads? I was really not sure what my take would be on this whole "roughing it" situation. Where are the nice cushy stalls and...heat, running water and toilets!? Regardless I took first that day and...I was hooked!

That's just how it happens isn't it? I soon was competing in every ride I could, not wanting to miss a weekend. I was one of the first ones to arrive and the last to leave on Sundays. The more people I met the more CMO obsessed I became.

In 2005 Val Kadzban and I began our

See ► **Changing**, P4

## CMO Evolves as Park Rules Tighten

by Marti Caldwell - IN Director

**WHEN CMO** started back in the 80's most of the rides were held in the huge forest preserves in MN and WI, where there were no rules about staying on the trails, and "Speed bumps" were few and far between. Trail etiquette was left up to each rider, and most were courteous and sensitive to the rights and needs of other trail users. Now, in many parts of the country we are experiencing some big changes. Popular parks with limited trail miles are being used more and more by hikers and bikers who can be easily upset by horse folks racing down trails, and leaving behind piles of manure to impede their feet or bike tires.

In the "olden days" the bearing from a landmark could lead you up one hill and down the other side, and no one worried about staying on the trails. It was legal to cut across from one trail to another, although, not always a

See ► **CMO Evolves**, P5



**President**  
IN Director  
Marti Caldwell  
cldwll@live.com



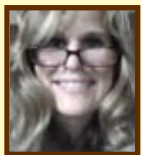
**Vice President**  
WA Director  
Donna Amos - WA  
pacificnwlonestar@gmail.com



**Treasurer**  
**National Pointskeeper**  
MN Director  
Jim Klein  
wendyandjim@sherbtl.net



**Secretary**  
NJ & PA Director  
Janet Citron  
horselady9@aol.com



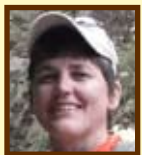
**Editor, Meadow Muffin**  
IL Director  
Colleen Cathcart  
studioc@geneseo.net



**AL Director**  
Jaime Ruff  
jaimeruff@gmail.com



**MI Director**  
Cindy List  
clist@waltersdimmick.com



**WI Director**  
Lisa Kaiser  
Chiro1bk@dishup.us

**ID & East WA (Selkirk)**  
Jeannie Payton  
jpfarm123@yahoo.com

**ND Contact**  
Gale Coleman  
gcoleman@srt.com

## Board Member Q & A

**The Meadow Muffin recently interviewed new NACMO President, Marti Caldwell**



NACMO President Marti Caldwell

**MM: How did you come to join CMO? What path brought you here?**

MC: My first cmo was a demo ride John and Kim Joos put on for our daughter's 4H club in MN in 1987. When we moved to NW IN in 1991 we brought CMO with us. The first IN/IL CMO was at Kankakee River SP in 1992. 4 of the 5 riders who came to that ride, still are members and ride managers today, over 20 years later.

**MM: What are you known for professionally? How long have you been doing that?**

MC: I am a veterinarian dealing primarily with small animals and exotics for almost 40 years.

**MM: Tell us about your family, horses, etc.**

MC: Married for 45 years to my first husband, Dave, who is a ruminant (cattle) nutritionist. We have a daughter, Sara, who met her husband at our awards banquet in 2004, and a son, Nathan, who is the "official" photographer and videographer for the CMOs at our farm. Sara is a microbiologist and asst. professor at Valparaiso University. Nathan is a videographer for Purdue University.

We have 8 horses - 2 old arabs we bought 26 years ago in MN when they were one day and 4 years old, 5 warmbloods that we raise to be hunter/jumper show horses and one young nutty arab.

**MM: What most excites you about serving on the NACMO board & the contribution you can make?**

MC: I have been a NACMO board member since the late 1980's and it's a hoot to be part of the evolution of the sport! CMO attracts the most diverse and interesting people, many of whom have become our dearest friends. We started the IN/IL chapter in order to find these folks and they keep bringing more people whose paths we would never have crossed in any other way. I am a detail person (OK, anal, picky, fussy) and organization oriented. Not very creative, but I can sort things out and get them in some kind of order. I hope to help CMO continue to be first about recreation, friendship and teamwork and second about competition.

**MM: What are you passionate about personally? What do you really enjoy? What can't you stop talking about?**

MC: I love training young horses. Watching them learn to trust and think rather than to spook and run is a real hoot for me. I am a nut about manners and calm, quiet behavior, and can't stand to see a horse with trailer loading issues or one who won't step up to a mounting block, trailer or picnic table to be mounted. I have been heard to say "it's not rocket science, folks!" when I see horses with bad manners.

A house full of good friends and family cooking and laughing in my kitchen with the barnlot full of rigs and horses is a treat we have enjoyed over Memorial weekend for the past 5 years.

**MM: Where can we find you when you're not working? What's your favorite way to spend a weekend or a Sunday afternoon?(other than on your horse or CMO'ing, of course!).**

MC: Ever since we moved to Dave's family farm in 2008, you can find us here working on the old house - c1851, and the farm - a section (square mile) in SE IN. Mt. Eschol stock farm raises beef cattle and crops - corn, beans and trees. My father in law put the wooded areas of the farm into the classified forest program over 50 years ago and we are learning

See ► **Caldwell, P5**



# ASK MUFFIN

*For all of your CMO-related questions, just ask "Muffin". She'll provide answers to your questions so you can stay at the top of your game!*

**Are you stymied by a situation that occurred at a ride? Wonder about a rule, or need guidance on trail etiquette? Whatever sort of CMO-related questions you have, just ask "Muffin". She'll answer your questions and help get you back in the game!**

Dear Muffin,

I know rule R-5 says a team may not split up to find more than one marker at a time. Just what does that mean?? Can my team go down different trails looking for the landmarks for a marker if more than one trail is in the circle? What if I have a "wardrobe malfunction", and have to tighten my girth, or repair my horse's hoof boot, or if I just have to pee? May the rest of my team go on ahead? Do I have to catch up before they get to the next circle? What if my horse is tired or I have a leg cramp? Is it ok for us to wait while our teammates go on, find the marker and come back for me? Who is watching anyway?

Signed, Confused

Muffin says:  
Dear Confused,

Thanks for asking! You are correct that if a circle covers more than one trail, it is just fine for members of a team to split up to look along the different trails [within the circle] for the land-

marks. Just remember two things after finding the objective: R-5: your team must regroup before going on to the next station, and contact to notify your teammates must be via voice or visual (per rule: no gunshots, no flare gun, etc., also: R-11: no cell phones/walkie-talkies).

It is also ok for one or more riders to stop to fix broken tack or answer nature's call, if they rejoin the rest of their team right away. Riding as a team means you are together – spreading out on the trail is a very different thing than being so far distant that you are out of voice contact, or have no idea where your teammates are. Also, if teammates are found to be separated by a long distance, other riders may assume you are looking for two different markers. Whether you are actually cheating or not, the appearance of impropriety is surely there and that is bad for our sport. CMO is

largely a self-policed sport, and should stay that way.

If you or your horse is lightly injured, or too tired to continue, you should withdraw from the competition and return

to camp. You will get credit for the markers you found with your team before you withdrew.

Be aware that you can be disqualified (no points for horse or rider) for inhumane treatment of your horse, or violation of the rules.

*Muffin*

*Answers to "Ask Muffin" questions are based on NACMO board member opinions and do not constitute a rule-change or addition. Rather, they are suggestive of what the board as a whole, believes proper behavior to be. Please submit questions for "Ask Muffin" to your state Director, or via email to: askmuffinCMO@gmail.com*

## NEW DIGITAL MAP LIBRARY

**Send in your equestrian trail maps to help grow the newly created NACMO Digital Map Library!**

**CHANCES ARE**, you have some great equestrian trail maps in your possession. They may be neatly organized in a binder; stuffed into your desk drawers; or like many, they're scattered haphazardly throughout your home and horse trailer.

Likely, your maps came from a variety of sources - like a State DNR website; an organized trail-ride you took while on vacation; or the last CMO ride in which you competed or served as ride manager. Perhaps, you've even created some

of your own trail-maps using a GPS!

Whatever the source, please consider submitting your maps to help grow the NACMO digital map library! The library is newly up-and-running on the homepage of the NACMO website. Downloadable maps are organized by state, and can be accessed by visiting the site and simply clicking on "Maps" on the left-hand side of the screen.

Here's how to submit your maps for inclusion in the library:

Please don't send copyrighted material, unless it is your own. If your map is already in digital (electronic) format, simply submit via email to:

NACMOmaps@gmail.com

If your map is in hardcopy format (on-paper), and no larger than 8.5" x 11", we may be able to scan it. Please send your hardcopy maps (along with a self-

addressed, stamped envelope if you would like your map returned to you) via "snail-mail" to:

NACMO Maps  
10093 N. 1750 Avenue  
Geneseo, IL 61254-8926

So let's start sending in those maps, folks! Your submissions are what will make our library grow. With any luck, the next time you need to obtain an equine trail-map, it'll be as simple as visiting the NACMO website. ■



## ► Changing

From Page 1

venture as first time ride managers. We took several trips to the Park to look for and put up our plates, I slept in the dressing room of her horse trailer. The weekend of our ride we went out to check plates. As many know that have hosted rides, there is a lot of getting on and off to check, fix or replace plates! I was so worn out by the end of one day. I couldn't figure out why I was having such a hard time with it. I rode a pony for crying out loud! Later I found I was pregnant! I had been trying for about 2 years and of course I find out while I'm roughing it on a CMO and feeling like utter crap!! I will never forget that ride. I ran out of the potluck crying because my emotions got the best of me when a member complained about one of my readings. I do not regret one minute of time and I realized then I wanted to be in charge of something. I wanted to put on more rides and be on the MiCMO Board.

I started as the MiCMO Secretary, and then moved on to the state Director position. Around 2008, following in the footsteps of my Aunt Jeanne & Uncle David Beroza, I decided I wanted to be MiCMO President. I teetered on the idea as at the time I was the youngest MiCMO member at 27 years old (with the exception of minors) and the mother of a toddler with a full time job. However I decided to face the feat and I ran for the office of MiCMO President and was unanimously voted in. A year or so later while serving as the Michigan State Director I decided I wanted to run for NACMO President. I was elected and began the task of being Editor of the Meadow Muffin.

Life was good! I earned many 1st place titles at the State Level and Reserve National High Point both as an Individual and on the Hot Pinks team. When my son, Logan, turned 5 he had been riding my old pony Alamo and I was riding her ½ Arab daughter Arwen. Logan and I began competing as a team. We took 1st place as a short course team. I was one happy momma!

Then as life often does, things changed. For very unfortunate rea-

sons I got divorced. This resulted in me having to sell my old pony Alamo, my trailer, my dog and moving. So balancing life as a single mom who worked full time, my priorities became two things: my son and my job. I have spent the last 3 years rebuilding all that was lost in such a short time. I have become the Vice President at my company (which is now covering 3 states and over 100 associates), I have rebuilt/acquired a wonderful family who provide a tremendous amount of support, but require an abundance of time! Three boys between the ages of 8-11, who participate in every sport (with the exception of horses!) keeps me running!

While today I can confidently "stand" here in front of you and tell you I am so proud of what I have accomplished, there may be many who do not know me outside of CMO, who never saw the big picture. My hope is that this column provides you the insight you may lack.

In conclusion of all of this, I am announcing that I have decided to step down as NACMO President. My personal and professional life requires every bit of my attention at this time. Therefore I would like to afford NACMO the opportunity to bring in a New President who is as ambitious as I was for so many years. The newly voted in President for NACMO is Marti Caldwell. I have had the pleasure of working with Marti my entire CMO career and I am confident she will uphold NACMO to its highest standards.

I would like to thank everyone I have come in contact with, both personally or cyber-ly, you all have been an inspiration to me. You know who you are! CMO has a great many people and as I announced to MiCMO, many hands makes little work. So please get involved!

This is not goodbye, but rather farewell for now. Don't worry, Dusty and I are still tearing up the trails and will definitely see a good many of you at future rides...as I like to say "sit down, shut up and HOLD ON!" ■

# how are **we** doing?

*CMO Ride-Stats from Across the Country*

Chapter	Number Rides/Riders	
	2012	2013
WA	26/573	25/461
IN/IL	24/433	24/569
MI	20/633	21/616
MN/WI	20/369	20/444
NJ/NY	11/120	9/151
AL	0/0	7/28
ID/WA	10/188	4/0
<b>Total</b>	<b>111/2316</b>	<b>110/2269</b>

## ► CMO Evolves

From Page 1

good idea since the trails often circled thickets or "sloughs" - swampy, deep, wet areas - making staying on the trails much the better decision. I know of no park in IN or IL where this is ok today.

Now, increased trail pressure from multiple users, "Snowy River" cowboys (and girls) who insist on cutting off switchbacks and plunging straight down hillsides, and slobs who dump trash on the trails, have made some park managers more and more hesitant to welcome groups who have more in mind than a quiet trail ride. We are seeing formal applications (with fees), special use permits, and increased rules aimed at any group who wishes to hold an organized event. Bike clubs, who are very well organized and have a large treasury, are making themselves popular with many parks, showing up in large numbers to work on trail maintenance and provide funds for park projects. Horse people, an inherently independent bunch, belong to many different disciplines who don't always appreciate each other's contribution to the overall horse trail experience we all desire. We are annoyed by the appearance of

See ► **CMO Evolves**, P5

## ► CMO Evolves

From Page 4

a bike rider bearing down on us, or a bunch of slow trail riders clogging up the trails. How are we dealing with this, and how is CMO evolving? Here in IN and IL, we have developed some strategies, and I am sure your chapter has, also - what do you do in your chapters?

Several IN/IL ride managers have learned some clever ways to hide plates in such a way that riders do not have to leave the trails by more than they would to let another rider or group pass, while still making sure they are visible from horseback. They could be high up in a tree, or deep in the foliage such that you have to be in precisely the correct spot to see them. Some are just below eye-level, or affixed to the underside of a branch that was pulled down and released after the plate was stapled on.

Yet another way to prevent the sport from deteriorating into a horse-race with a few very brief stops, is to make the landmarks more challenging to recognize. "Scott" markers, named for a pair of trees that both said "Scott loves Kathy", involve giving two compass bearings from two similar landmarks. Riders must decide which bearing goes with which landmark, before looking for the plate. Another technique involves one landmark whose bearing leads you to a second landmark, from which the plate is then found.

Since CMO is "the thinking rider's sport", ride managers are getting increasingly clever in making us slow down and figure out the problem. Circling several trails, hiding plates in "common" areas where riders are free to wander around in a larger area, and using landmarks that have similar or opposite bearings can make a ride more challenging while still keeping to the essence of the sport. One very clever ride manager used a tree with "a yellow ribbon, a red ribbon, a square, a circle and a triangle." Most of us worked the first tree we saw with these items on it for some time, before we noticed that it actually only had 4 of the 5 listed marks. Moving down the trail a bit, we found there were several such trees and only one of them had all 5 of the markings. ■

## ► Caldwell

From Page 2

to care for it as he did. Forest regeneration, management of hardwoods, invasive species, wildlife management and erosion control are all part of that. Gardening, both veggie and flower, is a major passion, probably fueled by my cheapness and my delight in growing FREE FOOD! I can't imagine a summer without ripe tomatoes, peppers etc., and preserving it just goes right along with that. FREE canned and frozen food!!! Whoo Hooo!

### **MM: Where did you grow up and why aren't you there now?**

MC: Born in Pittsburgh, I grew up in the suburbs of Rochester, NY. I came to Purdue for vet school and have followed Dave around ever since - first to Alabama and outside Boston for his army tour from 1968-70, then vet school at Purdue, then N of Chicago, N. of Philadelphia, W of Minneapolis, NW IN and finally here. At one time I had vet licenses from 5 different states! Expensive and a real bear to take all those state boards!

### **MM: Any awards or medals, or even medallions?**

MC: Some things related to the farm and classified forest, but we are just carrying on what my in laws did during their almost 70 years of care of the farm. Our CMO team, The Babes of the Woods, have been national champions three times, once when we lived in MN, once as an IL team and once as an IN team. We missed it by 1 minute 15 seconds or 2 riders last year (but we are so over that!!), and are currently in second place by 10 riders. It's a hoot for us old folks to still be in the same league with the big dogs!

### **MM: What would be impossible for you to give up?**

MC: It's a big list. Tops of course, is Dave, our family and life here at the farm. It is my greatest joy that our children still love to come home and "play" with us even though playing usually involves building fence, moving dirt somewhere, planting trees or some other thing that looks a whole lot like work. The horses fill a hole in me that nothing else quite does. Cooking with food we grow, and caring for the critters - cattle, horses, dogs, cats - gets us up in the morning. Caring for the farm keeps my inlaws from coming back to haunt us and will preserve it for our kids and their kids (hopefully!)

### **MM: What would people be surprised to know about you?**

MC: I am a pretty cheap date - and a couple glasses of sangria will get me pestering everyone in sight about CMO - what we should do at the banquet, what prizes to get, and who is managing rides for the next season.

I have removed a bladder stone the size of a golf ball from a tortoise and de-clawed an African lion. I raised German shepherds, was in a canine search and rescue group, and taught dogs (and people) to track. Dave and I were 4H leaders of the Seeing Eye Puppy raising club near Philadelphia and helped our kids raise 8 Seeing Eye puppies. I made my wedding dress which my daughter wore for her wedding 37 years later. I am an IN ASERT vet (Animal Surveillance Emergency Response Team) and run around in haz/mat suits from time to time.

**MM: Welcome to your new position, Marti - we can't wait to work with you to move NACMO forward! ■**

## TELL US ABOUT YOUR HORSE(S)!

### **Please take a moment to participate in a brief survey.**

Aside from a compass, your horse is your most valuable piece of equipment for participating in CMO. How many horses do you own? What breed(s) do you own? Do you keep your horse(s) at home, or board elsewhere? And, is there a particular breed of horse you feel is best-suited for competing in CMO? We'd love to know all about your horse, so please take a moment to participate in a brief survey by visiting the following website:

**<https://www.surveymonkey.com/s/TQ2DJ8P>**

We'll report the results in the next issue of The Meadow Muffin!



# Chapter News

Note: Chapters that do not report news provide their contact information. Full ride-results with all placings can be found at [www.nacmo.org](http://www.nacmo.org).



## ALABAMA

Jaime Ruff - AL Director

**A BIG** "Welcome to the CMO Family" goes out to the Alabama chapter, which got its start just a year ago! In November, 2012, Alabama director, Jaime Ruff conducted a free demo ride (which was attended by 12 competitors) at Paul M. Grist S.P. in Selma, AL. A sanctioned ride at the same park kicked off Alabama's season for 2013. According to Jaime, "Out of our attendees at that ride, we had 2 seasoned competitors - Jill VanSickle and Pat Richerson (both of the IN/IL Chapter) - come down to join us! We had a wonderful time, and were glad to see returning and new competitors alike."

Alabama's ride-year ended early this year, due to Jaime becoming pregnant, and on Wednesday, October 30th, she and her husband Jason welcomed their third child - son Hunter Allen Ruff into the world! Congratulations!

It doesn't appear as though Jaime is slowing down, though. She indicates the AL Chapter year-end banquet will be held sometime in Jan/Feb of 2014, and anticipates the new season to kick off shortly thereafter in March. On chapter development, Jaime says, "We need folks to get involved - manage rides, pass out fliers, and help the chapter grow. The more ride managers we have, the more opportunities ALL of us in Alabama will have to compete!"

Long Course **AL - "Let it Snow" - 1/27/13 - Mgr: Jaime Ruff**

Name	Horse	Time Elapsed	Total Pts	Place	Team #
Jill VanSickle	Taffy's Touch of Genius (Maggie)	03:15:00	16	1	G
Patricia Richerson	Galeno de Ciente (Galeno)	03:15:00	16	1	G
Tobi Abston	Grey	03:30:00	15	2	AL-1
Kelly Montgomery	Frank	03:30:00	15	2	AL-1
Judy Kehr	Jumper	03:30:00	15	2	AL-1
Jim Summers	horse	03:30:00	15	2	G



▲ Jaime Ruff prepares to hand out awards at a ride.

Long Course **AL - "Let it Snow" - 1/26/13 - Mgr: Jaime Ruff**

Name	Horse	Time Elapsed	Total Pts	Place
Jill VanSickle	Taffy's Touch of Genius (Maggie)	02:46:00	16	1
Patricia Richerson	Galeno de Ciente (Galeno)	02:46:00	16	1

Short Course

Name	Horse	Time Elapsed	Total Pts	Place
Ralph Holley	horse	02:34:00	8	1
Alden Holley	horse	02:34:00	8	1
Lynn Holley	horse	02:34:00	8	1
Julie Holley	horse	02:34:00	8	1
Kay Brosell	horse	04:09:00	7	2
Wayne Brosell	horse	04:09:00	7	2

Long Course **AL - "American Cowboy" - 4/6/13 - Mgr: Jaime Ruff**

Name	Horse	Time Elapsed	Total Pts	Place	Team #
Erin Loar	Mountains Moon River (River)	03:56:04	16	1	S
Debby Driskell	Lotsacash and Color (Cash)	03:57:01	15	2	S

Long Course **AL - "American Cowboy" - 4/7/13**

Name	Horse	Time Elapsed	Total Pts	Place	Team #
Sherry Piezon	Gabriel	03:12:30	11	1	S
Tobi Abston	Grey	04:11:05	10	2	AL-1
Kelly Montgomery	Frank	04:11:05	10	2	AL-1
Judy Kehr	Jumper	04:11:05	10	2	AL-1
Brian	Copper	04:11:05	10	2	AL-1





# INDIANA/ILLINOIS

Marti Caldwell - IN Director  
Colleen Cathcart - IL Director

The IN/IL Chapter hosted a total of twelve rides for the 2013 season. Ride Manager, Roxie Bank had this to say about the first ride of the season: "The Kingdom Prairie ride got off to a swinging start - the weather even turned out great for both days. Theresa and I had a bit of a challenge trying to hide markers so you couldn't see them from across the field or trails. I think we did a really good job, considering the comments of the riders eh they came back in! It's nice not to worry about stepping off the trails to hide plates. We had our usual yummy pot luck Saturday night, with a surprise visit from Norma Wells and Kathy Haas. It's always nice to see our members - with or without a horse."

### IN/IL - Kingdom Prairie (IN) - 4/27/13 - Mgrs: Roxie Bank/Theresa Serry

Long Course Name	Horse	Time Elapsed	Total Pts	Place	Team #
Jeanie Richardson	DBA Fahl Amir (Amir)	01:58:05	10	1	IN-4
Barbara McGivney	Lika Charmer (Charmer)	01:58:05	16	1	IN-4
Larry Dick	Dang It (Dang It)	01:58:05	16	1	IN-4
Sara Dick	Zima	01:58:05	16	1	IN-4
Marti Caldwell	Quacklin Rouge (Daisy)	01:58:05	16	1	IN-4
Laura Downey	Dancin' In The Dark (Cocoa)	02:39:53	15	2	IN-1
Cecelia Wozniak	W Rolling Thunder (Thunder)	02:39:53	15	2	IN-1
Barbara Wittenhagen	Brett's Charlie Go Boy (Harley)	02:39:53	15	2	IN-1

Short Course Name	Horse	Elapsed	Pts	Place	#
George Tachtiris	Chance	02:55:14	8	1	S

### IN/IL - Kingdom Prairie (IN) - 4/28/13

Long Course Name	Horse	Time Elapsed	Total Pts	Place	Team #
Barbara McGivney	Lika Charmer (Charmer)	02:55:25	16	1	IN-4
Larry Dick	Dang It (Dang It)	02:55:25	16	1	IN-4
Sara Dick	Zima	02:55:25	16	1	IN-4
Marti Caldwell	DBA Fahl Amir (Amir)	02:55:25	16	1	IN-4
George Tachtiris	Chance	02:57:22	15	2	G
Barbara Wittenhagen	Brett's Charlie Go Boy (Harley)	02:57:22	15	2	G

### IN/IL - Mt. Eschol (IN) - 5/25/13 - Mgrs: Dave & Marti Caldwell

Long Course Name	Horse	Time Elapsed	Total Pts	Place	Team #
Sara Dick	DBA Fahl Amir (Amir)	02:05:22	16	1	IN-4
Larry Dick	Quacklin Rouge (Daisy)	02:05:22	16	1	IN-4
Deb DeVries	August (Gust)	02:25:16	15	2	IN-5
Bruce DeVries	Yankee (Yankee)	02:25:16	15	2	IN-5

Short Course Name	Horse	Time Elapsed	Total Pts	Place	Team #
Roxie Bank	Brett's Charlie Go Boy (Harley)	01:18:35	8	1	IN-1
Barbara Wittenhagen	Dolly's Silver Ace (Copper)	01:18:35	8	1	IN-1
Kathy Haas	Paperchase(hershey)	02:00:59	7	2	IN-6
John Haas	Meeko Sundance (Meeko)	02:00:59	7	2	IN-6

### IN/IL - Mt. Eschol (IN) - 5/26/13

Long Course Name	Horse	Time Elapsed	Total Pts	Place	Team #
Jessica Reed	Doc	01:22:13	16	1	IL-4
Jamie Reed	Captain Jack	01:22:13	16	1	IL-4
Michael Cruson	Diesel	01:22:13	16	1	IL-4
Svenja Chesna	Onyx Black Jewel (Zoie)	01:53:11	15	2	IL-17
Danielle Popovich	Ginger	01:53:11	15	2	IL-17
Pat Mouw	Ty	01:53:11	15	2	IL-17

Short Course Name	Horse	Time Elapsed	Total Pts	Place	Team #
Roxie Bank	Brett's Charlie Go Boy (Harley)	01:30:11	8	1	IN-1
Barbara Wittenhagen	Dolly's Silver Ace (Copper)	01:30:11	8	1	IN-1
Deb Roberts	Kita (Kita)	02:07:10	7	2	IN-16
Beth Jerman	Fire In The Night (Fire)	02:07:10	7	2	IN-16
Lisa Muench	Bo	02:07:10	7	2	IN-16

### IN/IL - Mt. Eschol (IN) - 5/27/13

Long Course Name	Horse	Time Elapsed	Total Pts	Place	Team #
Jamie Reed	Captain Jack	01:49:32	16	1	IL-4
Michael Cruson	Freddie (Denny)	01:49:32	16	1	IL-4
Svenja Chesna	Onyx Black Jewel (Zoie)	01:54:19	15	2	IL-17
Danielle Popovich	Ginger	01:54:19	15	2	IL-17
Pat Mouw	Ty	01:54:19	15	2	IL-17
Patricia Richerson	Galeno de Ciente (Galeno)	01:54:19	15	2	IL-17

Short Course Name	Horse	Time Elapsed	Total Pts	Place	Team #
Shawn Cathcart	ZuZu (ZuZu)	01:00:56	8	1	IL-16
Brandon Cathcart	Josie (Josie)	01:00:56	8	1	IL-16
Deb Roberts	Kita (Kita)	01:58:52	7	2	IN-16
Beth Jerman	Fire In The Night (Fire)	01:58:52	7	2	IN-16
Eileen Jones	Scud Buster M. (Buster)	01:58:52	7	2	IN-16
Lisa Muench	Bo	01:58:52	7	2	IN-16

The second ride of the season was held at Mt. Eschol Stock Farm - home of Dave and Marti Caldwell. Marti has this to report on the ride: "We had a great turnout for the 5th CMO here at our farm. A total of 96 riders participated in long and short course rides over the three days, successfully navigating the cattle pastures, woods and farm roads to find the markers where there were no rules requiring riders (or ride managers!) to stay on the trails. The weather cooperated, silos were climbed, and the pot lucks were splendid."





**The Kankakee River CMO**, in Bourbonnais IL, was held June 15 & 16 this year. "This ride always gets a good turnout and this year was no exception," said ride manager Pat Mouw. "We had a total of 36 riders over the 2 days and everyone enjoyed seeing the Reed granddaughters, ages 4 & 5, in their pink helmets & body vests, competing with the adults." ▼



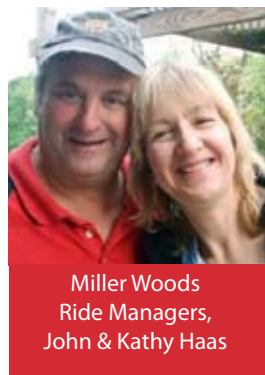
Denise Bingamon, Kyla Reed, Kandace Reed, and Jamie Reed.

Both days turned out hot & steamy, so several riders (and one ride manager) took advantage of the showers in the "people campground" to cool off. Pat indicated, "The Indiana teams dominated both days (you know who you are) as they took the top 3 places. Thanks to all who participated. Come again next year!"

**IN/IL - Kankakee River (IL) - 6/15/13 - Mgrs: Pat Mouw/Christina Sepiol**

Long Course						
Name	Horse	Time Elapsed	Total Pts	Place	Team #	
Theresa Serry	Wildfire	02:05:33	16	1	IN-10	
Patricia Richerson	Galeno de Ciente (Galeno)	02:05:33	16	1	IN-10	
Alexis McEwan	Airborne (Airborne)	02:05:33	16	1	IN-10	
Bruce DeVries	Yankee (Yankee)	02:26:56	15	2	IN-5	
Deb DeVries	August (Gust)	02:26:56	15	2	IN-5	
Linda Gunter	Smokey (Smokey)	02:26:56	15	2	IN-5	
Short Course						
Name	Horse	Time Elapsed	Total Pts	Place	Team #	
Robin Sahrner	Sparkie	01:16:42	8	1	IN-1	

IN/IL - Kankakee River (IL) - 6/16/13						
Name	Horse	Time Elapsed	Total Pts	Place	Team #	
Theresa Serry	Wildfire	01:38:54	16	1	IN-10	
Patricia Richerson	Airborne (Airborne)	01:38:54	16	1	IN-10	
Alexis McEwan	Galeno de Ciente (Galeno)	01:38:54	16	1	IN-10	
Marti Caldwell	Quacklin Rouge (Daisy)	01:44:42	15	2	IN-4	
Sara Dick	Zima	01:44:42	15	2	IN-4	
Larry Dick	Dang It (Dang It)	01:44:42	15	2	IN-4	
Jacke Reynolds	DBA Fahl Amir (Amir)	01:44:42	15	2	IN-4	



Miller Woods Ride Managers, John & Kathy Haas

**Nineteen competitors** rode in the Miller Woods CMO, held on July 20th in Lake Village, IN. Manager, Kathy Haas said, "We had nice weather, and this is the first time that the cows and bull did not come visit us in camp. After having a more difficult time navigating the trails, due to trees being down from storms, everyone made it back in okay. We went to Sara & Larry (Dick's) home afterwards for a nice carry-in dinner. Thanks to everyone for a great day!"

**Long Course IN/IL - Miller Woods (IN) - 7/20/13 - Mgrs: John & Kathy Haas**

Name	Horse	Time Elapsed	Total Pts	Place	Team #
Theresa Serry	Wildfire	02:25:20	16	1	IN-10
Patricia Richerson	Galeno de Ciente (Galeno)	02:25:20	16	1	IN-10
Deb DeVries	August (Gust)	02:31:37	15	2	IN-5
Bruce DeVries	Yankee (Yankee)	02:31:37	15	2	IN-5
Short Course					
Name	Horse	Time Elapsed	Total Pts	Place	Team #
Roxie Bank	Brett's Charlie Go Boy (Harley)	01:27:10	8	1	IN-1
Cecelia Wozniak	W Rolling Thunder (Thunder)	01:27:10	8	1	IN-1
Linda Paustian	Tango Star	03:09:10	6	2	G
Cindy Hotz	chaos	03:09:10	6	2	G

**IN/IL - Deep River (IN) - 7/21/13 - Mgrs: Danielle Popovich/Christina Sepiol**

Long Course					
Name	Horse	Time Elapsed	Total Pts	Place	Team #
Larry Dick	Dang It (Dang It)	01:19:10	16	1	IN-4
Sara Dick	Zima	01:19:10	16	1	IN-4
Marti Caldwell	DBA Fahl Amir (Amir)	01:19:10	16	1	IN-4
Barbara McGivney	Lika Charmer (Charmer)	01:19:10	16	1	IN-4
Patricia Richerson	Galeno de Ciente (Galeno)	01:46:20	15	2	IN-10
Theresa Serry	AnnaBelle	01:46:20	15	2	IN-10

**The 3-day "Big River" ride**, held in Keithsburg, IL over Labor Day weekend, was attended by competitors from IL, IA, IN and WI. "In the weeks before the ride, we had perfect, cool temps for setup, but things sure got hot over the ride weekend," said manager, Shawn Cathcart. "We had a great, fun group; fantastic pot lucks; and got to welcome two new members to our sport: Father/Daughter team, Garvin & Sarah Smith. Huge thanks to everyone who came out to play with us that weekend!"



New members, Sarah & Garvin Smith with ride mgr., Shawn Cathcart.

**IN/IL - Big River (IL) - 8/31/13 - Mgrs: Shawn & Colleen Cathcart**

Long Course					
Name	Horse	Time Elapsed	Total Pts	Place	Team #
Michaela Cruson	doc	02:43:02	16	1	IL-11
Jessica Reed	Doc	02:43:02	16	1	IL-11
Jamie Reed	Captain Jack	02:43:02	16	1	IL-11
Marti Caldwell	DBA Fahl Amir (Amir)	03:05:29	15	2	IL-10
Denise Bingamon	Talfy's Touch of Genius (Maggie)	03:05:29	15	2	IL-10
Carol Bertilson	CK Lee's April Love (April Love)	03:05:29	15	2	IL-10
Short Course					
Name	Horse	Time Elapsed	Total Pts	Place	Team #
John Newton	Rock The Intimidator (Trey)	02:42:09	8	1	IA-02
Betty Newton	Ima Skip Ditto Moon (Skeeter)	02:42:09	8	1	IA-02
Keith Newton	Grover	02:42:09	8	1	IA-02



**IN/IL - Big River (IL) - 9/1/13**

Long Course		Name	Horse	Time Elapsed	Total Pts	Place	Team #
		Marti Caldwell	Quacklin Rouge (Daisy)	02:15:56	16	1	IN-4
		Jeanie Richardson	DBA Fahl Amir (Amir)	02:15:56	16	1	IN-4
		Pamela J. Talsky	BAD Shah Armani (Armani)	02:18:18	15	2	IL-6
		Linda Duhacek	Bandit (Bandit)	02:18:18	15	2	IL-6
		Jessica Reed	Doc	02:19:11	14	3	IL-11
		Michaela Cruson	doc	02:19:11	14	3	IL-11
Short Course		Name	Horse	Time Elapsed	Total Pts	Place	Team #
		John Newton	Rock The Intimidator (Trey)	02:17:23	8	1	IA-02
		Betty Newton	Ima Skip Ditto Moon (Skeeter)	02:17:23	8	1	IA-02
		Keith Newton	Grover	02:17:23	8	1	IA-02

**IN/IL - Big River (IL) - 9/2/13**

Long Course		Name	Horse	Time Elapsed	Total Pts	Place	Team #
		Pamela J. Talsky	BAD Shah Armani (Armani)	01:24:19	16	1	IL-6
		Linda Duhacek	Bandit (Bandit)	01:24:19	16	1	IL-6
		Mike Fisher	Foo Foo (Foo Foo)	01:56:29	15	2	IL-3
		Lisa Strafford	Black Olive (Ollie)	01:56:29	15	2	IL-3
Short Course		Name	Horse	Time Elapsed	Total Pts	Place	Team #
		John Newton	Rock The Intimidator (Trey)	01:14:02	8	1	IA-02
		Betty Newton	Ima Skip Ditto Moon (Skeeter)	01:14:02	8	1	IA-02
		Keith Newton	Grover	01:14:02	8	1	IA-02
		Jill Watson	Misty	01:37:49	7	2	G
		Kathy Glick	Lizzy	01:37:49	7	2	G

**After competing** in the Big River CMO over Labor Day weekend, Jeanie Richardson and Marti Caldwell drove to Matthiessen S.P., where they had a dandy 4 days setting up the ride for the next weekend. Marti reported, "Good friends, Sandy DiFrancesco and Kelly Runser joined us for dinner in town one evening, and former member and 2011 National Individual Male Champion, Jerie Friday, popped in with us a bit on his way back to his home in Florida." 25 riders on Saturday and 21 on Sunday found their way around the large and sometimes confusing trail system, in times ranging from 2 1/2 hours to almost 6 on Saturday, and just under 2 to 3 1/2 on Sunday.

**IN/IL - Matthiessen (IL) - 9/7/13 - Mgrs: Marti Caldwell/Jeanie Richardson**

Long Course		Name	Horse	Time Elapsed	Total Pts	Place	Team #
		Patricia Richerson	Airborne (Airborne)	02:17:08	16	1	IN-10
		Theresa Serry	Galeno de Ciente (Galeno)	02:17:08	16	1	IN-10
		Jamie Reed	Captain Jack	02:33:48	15	2	IL-4
		Denise Bingamon	Taffy's Touch of Genius (Maggie)	02:33:48	15	2	IL-4
		Ben Kamen	Diesel	02:33:48	15	2	IL-4

**IN/IL - Matthiessen (IL) - 9/8/13**

Long Course		Name	Horse	Time Elapsed	Total Pts	Place	Team #
		Larry Dick	Dang It (Dang It)	01:58:11	16	1	IN-4
		Barbara McGivney	Lika Charmer (Charmer)	01:58:11	16	1	IN-4
		Sara Dick	Zima	01:58:11	16	1	IN-4
		Jamie Reed	Captain Jack	02:09:25	15	2	IL-4
		Ben Kamen	Diesel	02:09:25	15	2	IL-4
		Denise Bingamon	Taffy's Touch of Genius (Maggie)	02:09:25	15	2	IL-4
Short Course		Name	Horse	Time Elapsed	Total Pts	Place	Team #
		Roxie Bank	Brett's Charlie Go Boy (Harley)	02:07:03	6	1	IN-1
		Barbara Wittenhagen	Dolly's Silver Ace (Copper)	02:07:03	6	1	IN-1

**IN/IL - Middle Fork (IL) - 9/28/13 - Mgrs: Carol Bertilson/Denise Bingamon**

Long Course		Name	Horse	Time Elapsed	Total Pts	Place	Team #
		Jamie Reed	Captain Jack	03:05:42	16	1	IL-4
		Jessica Reed	Doc	03:05:42	16	1	IL-4
		Ben Kamen	Diesel	03:05:42	16	1	IL-4
		Theresa Serry	Galeno de Ciente (Galeno)	03:20:10	15	2	IN-10
		Patricia Richerson	Airborne (Airborne)	03:20:10	15	2	IN-10
Short Course		Name	Horse	Time Elapsed	Total Pts	Place	Team #
		Terry Hanson	?	02:46:37	8	1	G
		Andrew Green	?	02:46:37	8	1	G
		Billy Adams	?	02:46:37	8	1	G
		Rick Linne	?	02:46:37	8	1	G
		Katie Copeland	Cisco	03:54:12	7	2	G
		Rebecca Reinhart	Johnny	03:54:12	7	2	G

**IN/IL - Middle Fork (IL) - 9/29/13 - Mgrs: Denise Bingamon/Jamie Reed**

Long Course		Name	Horse	Time Elapsed	Total Pts	Place	Team #
		Larry Dick	Dang It (Dang It)	01:51:02	16	1	IN-4
		Sara Dick	Zima	01:51:02	16	1	IN-4
		Marti Caldwell	Quacklin Rouge (Daisy)	01:51:02	16	1	IN-4
		Dave Caldwell	DBA Fahl Amir (Amir)	01:51:02	16	1	IN-4
		Barbara McGivney	Lika Charmer (Charmer)	01:51:02	16	1	IN-4
		Patricia Richerson	Airborne (Airborne)	02:00:09	15	2	IN-10
		Theresa Serry	Galeno de Ciente (Galeno)	02:00:09	15	2	IN-10
Short Course		Name	Horse	Time Elapsed	Total Pts	Place	Team #
		Cecelia Wozniak	W Rolling Thunder (Thunder)	02:07:49	8	1	G
		Debra Rubel	Whiskey Mack (Mach)	02:07:49	8	1	G
		Pat Mouw	Ty	02:07:49	8	1	G
		Linda Gunter	HF Doc Super Sport (Sport)	02:42:06	7	2	IN-15
		Krysten Gunter	Smokey (Smokey)	02:42:06	7	2	IN-15
		Karleen Volk	Leathal's Iron Man (Starke)	02:42:06	7	2	IN-15

**IN/IL - Tippecanoe River (IN) - 10/5/13 - Mgrs: Bruce & Deb DeVries**

Long Course		Name	Horse	Time Elapsed	Total Pts	Place	Team #
		Marti Caldwell	Quacklin Rouge (Daisy)	01:52:14	16	1	IN-4
		Sara Dick	Zima	01:52:14	16	1	IN-4
		Larry Dick	Dang It (Dang It)	01:52:14	16	1	IN-4
		Pamela J. Talsky	BAD Shah Armani (Armani)	02:44:38	15	2	IL-6
		Linda Duhacek	Bandit (Bandit)	02:44:38	15	2	IL-6
Short Course		Name	Horse	Time Elapsed	Total Pts	Place	Team #
		Roxie Bank	Brett's Charlie Go Boy (Harley)	01:05:00	8	1	IN-1
		Barbara Wittenhagen	Dolly's Silver Ace (Copper)	01:05:00	8	1	IN-1
		Patricia Richerson	Airborne (Airborne)	02:33:50	7	2	S

**IN/IL - Tippecanoe River (IN) - 10/6/13**

Long Course		Name	Horse	Time Elapsed	Total Pts	Place	Team #
		Marti Caldwell	Quacklin Rouge (Daisy)	01:19:44	16	1	IN-4
		Sara Dick	Zima	01:19:44	16	1	IN-4
		Larry Dick	Dang It (Dang It)	01:19:44	16	1	IN-4
		Jamie Reed	Captain Jack	01:33:20	15	2	G
		Ben Kamen	Freddie (Denny)	01:33:20	15	2	G
Short Course		Name	Horse	Time Elapsed	Total Pts	Place	Team #
		Roxie Bank	Brett's Charlie Go Boy (Harley)	01:09:52	8	1	IN-1
		Cecelia Wozniak	W Rolling Thunder (Thunder)	01:09:52	8	1	IN-1
		Laura Downey	Dancin' In The Dark (Cocoa)	01:09:52	8	1	IN-1
		Linda Byer	Dancer	01:23:12	7	2	IN-2
		Laura VanMeter	Kariq's Imagination (Image)	01:23:12	7	2	IN-2



**IN/IL - Versailles (IN) - 10/12/13 - Mgrs: Roberta Everage/Laura VanMeter**

Long Course						
Name	Horse	Time Elapsed	Total Pts	Place	Team #	
Marti Caldwell	DBA Fahl Amir (Amir)	04:24:24	16	1	IN-4	
Dave Caldwell	Quacklin Rouge (Daisy)	04:24:24	16	1	IN-4	
Larry Dick	Dang It (Dang It)	04:24:24	16	1	IN-4	
Sara Dick	Zima	04:24:24	16	1	IN-4	
Jacke Reynolds	JR Spirit Journey (Journey)	04:24:24	16	1	IN-4	
Jamie Reed	Captain Jack	06:29:00	12	2	IL-11	
Kandace Reed	Sammy (Sammy)	06:29:00	12	2	IL-11	
Kyla Reed	Freddie (Denny)	06:29:00	12	2	IL-11	
Ben Kamen	Diesel	06:29:00	12	2	IL-11	
Short Course						
Name	Horse	Time Elapsed	Total Pts	Place	Team #	
Roxie Bank	Brett's Charlie Go Boy (Harley)	03:34:00	8	1	IN-1	
Cecelia Wozniak	W Rolling Thunder (Thunder)	03:34:00	8	1	IN-1	
Linda Byer	Dancer	03:34:00	8	1	IN-1	
Allison Boggs	Gatlin	04:13:25	5	2	G	
Chris Boggs	Blitz	04:13:25	5	2	G	

**IN/IL - Versailles (IN) - 10/13/13**

Long Course						
Name	Horse	Time Elapsed	Total Pts	Place	Team #	
Jamie Reed	Captain Jack	02:28:57	16	1	S	
Marti Caldwell	DBA Fahl Amir (Amir)	02:54:35	15	2	IN-4	
Dave Caldwell	Quacklin Rouge (Daisy)	02:54:35	15	2	IN-4	
Larry Dick	Dang It (Dang It)	02:54:35	15	2	IN-4	
Sara Dick	Zima	02:54:35	15	2	IN-4	
Short Course						
Name	Horse	Time Elapsed	Total Pts	Place	Team #	
Jacke Reynolds	JR Spirit Journey (Journey)	03:30:24	8	1	S	
Linda Byer	Jet (Jet)	04:22:00	7	2	S	

**Ride Managers** Pat Richerson and Melody Austin have this to say about the Potato Creek CMO held on November 2nd & 3rd:

Even though Sat. was rainy, 28 riders braved the elements and soldiered on to compete. Larry and Sara Dick, once again, came to the rescue with their canopy for the potluck. Sunday dawned sunny with clear skies. Again, 28 riders made it out on the course. We had quite a few day riders - 15 to be exact - and a couple of Michigan members came on down...way to go MiCCMO members for representing your chapter. We would both like to thank all the riders for making our first time managing a ride a memorable one, the encouraging comments were greatly appreciated and helps us feel more confident about managing another ride next year...Potato Creek in August anyone? See you there!!!

**IN/IL - Potato Creek (IN) - 11/2/13 - Mgrs: Pat Richerson/Melody Austin**

Long Course						
Name	Horse	Time Elapsed	Total Pts	Place	Team #	
Pat Moww	Ty	01:42:24	16	1	IN-4	
Larry Dick	Dang It (Dang It)	01:42:24	16	1	IN-4	
Sara Dick	Zima	01:42:24	16	1	IN-4	
Marti Caldwell	Quacklin Rouge (Daisy)	01:42:24	16	1	IN-4	
Bruce DeVries	Yankee (Yankee)	02:26:14	15	2	IN-5	
Deb DeVries	August (Gust)	02:26:14	15	2	IN-5	
Roxie Bank	Brett's Charlie Go Boy (Harley)	02:26:14	15	2	IN-5	
Short Course						
Name	Horse	Time Elapsed	Total Pts	Place	Team #	
Cindy Hotz	xaos	02:37:25	8	1	G	
Linda Paustan	Tango Star	02:37:25	8	1	G	

**IN/IL - Potato Creek (IN) - 11/3/13**

Long Course						
Name	Horse	Time Elapsed	Total Pts	Place	Team #	
Theresa Serry	Galeno de Ciente (Galeno)	01:13:38	16	1	IN-10	
Alexis McEwan	Airborne (Airborne)	01:13:38	16	1	IN-10	
Sara Dick	Zima	01:17:30	15	2	IN-4	
Larry Dick	Dang It (Dang It)	01:17:30	15	2	IN-4	
Marti Caldwell	Quacklin Rouge (Daisy)	01:17:30	15	2	IN-4	
Short Course						
Name	Horse	Time Elapsed	Total Pts	Place	Team #	
Cindy Hotz	xaos	01:22:32	8	1	G	
Linda Paustan	Tango Star	01:22:32	8	1	G	

**The last** ride of the (IN/IL) season was held at Wildcat Creek in Bringham, IN. This private campground is a new venue for our group, and it is safe to say we'll likely return. While the trail-system here is on the smaller-side mileage-wise, it's a lovely spot to ride, features a historic covered-bridge, and the camp-owners are wonderful. In all, it was a great spot to wrap up the season!

**IN/IL - Wildcat Creek (IN) - 11/9/13 - Mgrs: Cecilia Wozniak/Laura Downey**

Long Course						
Name	Horse	Time Elapsed	Total Pts	Place	Team #	
Marti Caldwell	Quacklin Rouge (Daisy)	02:24:25	15	1	IN-4	
Sara Dick	Zima	02:24:25	15	1	IN-4	
Larry Dick	Dang It (Dang It)	02:24:25	15	1	IN-4	
Barbara McGivney	Lika Charmer (Charmer)	02:24:25	15	1	IN-4	
Julie Irwin	EZ Go (EZ)	02:34:55	14	2	IN-5	
Deb DeVries	August (Gust)	02:34:55	14	2	IN-5	
Bruce DeVries	Yankee (Yankee)	02:34:55	14	2	IN-5	

**IN/IL - Wildcat Creek (IN) - 11/10/13 - Mgrs: Roxie Bank/Deb DeVries**

Long Course						
Name	Horse	Time Elapsed	Total Pts	Place	Team #	
Marti Caldwell	Quacklin Rouge (Daisy)	01:21:03	16	1	IN-4	
Larry Dick	Dang It (Dang It)	01:21:03	16	1	IN-4	
Sara Dick	Zima	01:21:03	16	1	IN-4	
Barbara McGivney	Lika Charmer (Charmer)	01:21:03	16	1	IN-4	
Svenja Chesna	Cloud's Shadow Traveler (Shadow)	01:30:28	15	2	IL-17	
Danielle Popovich	Ginger	01:30:28	15	2	IL-17	



"Babes of The Woods" team rest their horses at Wildcat Creek covered bridge.





# MICHIGAN

Cindy List - MI Director

**2013 year** of CMO has concluded and it seems like just yesterday we were getting trailers ready, tack prepared and horses conditioned to ride. The Michigan chapter was very busy this year with many new faces and new ride managers.

We added Yankee Springs Equestrian area, Fort Custer and Cummings Center to our list of ride venues this year. They were used many years ago but they were brought back into the rotation this year. Our ride managers did such a great job on themes and activities for a fun year. We started the year with a fundraiser Horses for Hope CMO. We traveled to Hadley Hills CMO, went Back to Basics CMO and ended up in Never Never Land at the Once Upon a Time CMO. We rode like the British were Coming CMO and then did the Boot Scootin Boogie CMO. Well don't get your Undies in a Wad CMO and Go to the Fair CMO and Take a Gamble CMO while you Keep it Simple CMO. Barb Drake and Linda Kraai put on a great beginners clinic in July and there was a great turn out with lots of fun and prizes.

The Potlucks were amazing and the bonfires with the hollow logs were very entertaining. This year we had a lot of flockings (flamingo attacks) at campsites happening at each CMO and that was a blast. We are on our second year of donations to the trail group associated with the park we are using and based upon the number of riders for the weekend. They really appreciate the donation.

Our elections will be happening in the month of November and we are losing our long term president Alison Bennett. She is very busy with work and family. We appreciate her hard work and dedication that she has put into the group and she will be missed. We are now looking forward to the banquet and starting to get preparations underway. Michigan is looking forward to 2014!!

## MI - Elba Equestrian Complex - 5/4/13 - Mgrs: Greg & Linda Weirauch

Long Course Name	Horse	Time Elapsed	Total Pts	Place	Team #
Christine Carlson	Una	02:31:21	16	1	MI-2
Bonny Wrobel	Sunny Poco Music (Sisco)	02:31:21	16	1	MI-2
Barbara Drake	Just A Country Classic (Ernie)	02:31:21	16	1	MI-2
Cindy Debiak	Gallant Spun Honey (Honey)	02:31:21	16	1	MI-2
Linda Kraai	Mekas Dream (Meka)	02:31:21	16	1	MI-2
Randall Fox	Baby	03:20:18	15	2	MI-37
Melissa Fox	Willow	03:20:18	15	2	MI-37
Short Course Name	Horse	Time Elapsed	Total Pts	Place	Team #
John Debiak	Bayleigh	01:32:55	8	1	MI-38
Abigail Debiak	Star	01:32:55	8	1	MI-38
Tonica Bates	Cinderfella Royal (Fella)	02:07:32	7	2	MI-7
Jessica Bates	Qui Anna	02:07:32	7	2	MI-7
Cindy Cowell	Razzberry	02:07:32	7	2	MI-7

## MI - Elba Equestrian Complex - 5/5/13

Long Course Name	Horse	Time Elapsed	Total Pts	Place	Team #
Cindy Debiak	Gallant Spun Honey (Honey)	02:27:11	16	1	MI-2
Barbara Drake	Just A Country Classic (Ernie)	02:27:11	16	1	MI-2
Linda Kraai	Mekas Dream (Meka)	02:27:11	16	1	MI-2
Royla Westphal	If It Pleases the Bar (Slick)	02:52:41	15	2	S
Short Course Name	Horse	Time Elapsed	Total Pts	Place	Team #
Linda Paushan	unknown	02:05:07	8	1	G
Cindy Hotz	xaos	02:05:07	8	1	G
John Debiak	Bayleigh	01:34:07	6	2	MI-38
Abigail Debiak	Star	01:34:07	6	2	MI-38

## MI - Hadley Hills - 5/18/13 - Mgrs: Steve & Vera Keim

Long Course Name	Horse	Time Elapsed	Total Pts	Place	Team #
Christine Carlson	Una	03:03:43	16	1	MI-2
Barbara Drake	Just A Country Classic (Ernie)	03:03:43	16	1	MI-2
Linda Kraai	Mekas Dream (Meka)	03:03:43	16	1	MI-2
Cindy Debiak	Gallant Spun Honey (Honey)	03:03:43	16	1	MI-2
Trudi Reurink	Sensational Rambo Cowboy (Bo)	03:50:19	15	2	MI-36
Katelyn Potter	Captain Midnight's Rising Sun (Ace)	03:50:19	15	2	MI-36
Luann Huizinga	Savey (Savey)	03:50:19	15	2	MI-36
Deborah L Schrock	Ice	03:50:19	15	2	MI-36
Julie Reurink	Corval (Corval)	03:50:19	15	2	MI-36
Short Course Name	Horse	Time Elapsed	Total Pts	Place	Team #
John Debiak	Flame	02:07:26	7	1	MI-38
Abigail Debiak	Star	02:07:26	7	1	MI-38
Jessica Bates	Qui Anna	02:50:02	6	2	MI-7
Tonica Bates	Royal T (Royal T)	02:50:02	6	2	MI-7

## MI - Hadley Hills - 5/19/13

Long Course Name	Horse	Time Elapsed	Total Pts	Place	Team #
Christine Carlson	Una	01:48:52	16	1	MI-2
Barbara Drake	Just A Country Classic (Ernie)	01:48:52	16	1	MI-2
Linda Kraai	Mekas Dream (Meka)	01:48:52	16	1	MI-2
Cindy Debiak	Gallant Spun Honey (Honey)	01:48:52	16	1	MI-2
Dennis Hurley	Toby	01:48:52	16	1	G
Aleena Carter	Avitars Andy (Andy)	02:37:36	15	2	MI-33
Rebecca Ferris	Northwest Ladys King (Mack)	02:37:36	15	2	MI-33
Short Course Name	Horse	Time Elapsed	Total Pts	Place	Team #
John Debiak	Flame	01:37:06	8	1	MI-38
Abigail Debiak	Star	01:37:06	8	1	MI-38
Katelyn Potter	Captain Midnight's Rising Sun (Ace)	01:38:11	7	2	MI-36
Luann Huizinga	Savey (Savey)	01:38:11	7	2	MI-36
Deborah L Schrock	Ice	01:38:11	7	2	MI-36
Trudi Reurink	Sensational Rambo Cowboy (Bo)	01:38:11	7	2	MI-36
Julie Reurink	Corval (Corval)	01:38:11	7	2	MI-36

## MI - Silver Creek - 6/1/13 - Mgr: Vicki Horsley

Long Course Name	Horse	Time Elapsed	Total Pts	Place	Team #
Rebecca Ferris	Northwest Ladys King (Mack)	02:42:10	16	1	MI-33
Cindy List	Gypsyps Golden Doll (Dolly)	02:42:10	16	1	MI-33
Patricia Richerson	Airborne (Airborne)	03:15:00	15	2	IN-10
Lisa Jesswein	Galeno de Ciente (Galeno)	03:15:00	15	2	G
Theresa Serry	Wildfire	03:15:00	15	2	IN-10
Short Course Name	Horse	Time Elapsed	Total Pts	Place	Team #
Abigail Debiak	Star	01:08:00	8	1	MI-38
John Debiak	Flame	01:08:00	8	1	MI-38
Joanne Coy	Duncan's Diamonds (Duncan)	01:09:58	7	2	G
Cheryl Ulsh	Tardy Two McCue (Tuxedo)	01:09:58	7	2	G



**Long Course MI - Silver Creek - 6/2/13**

Name	Horse	Time Elapsed	Total Pts	Place	Team #
Barbara Drake	Just A Country Classic (Ernie)	02:49:31	16	1	MI-2
Cindy Debiak	Gallant Spun Honey (Honey)	02:49:31	16	1	MI-2
Linda Kraai	Mekas Dream (Meka)	02:49:31	16	1	MI-2
Lisa Jesswein	Galeno de Ciente (Galeno)	02:51:29	15	2	G
Theresa Serry	Wildfire	02:51:29	15	2	IN-10
Patricia Richerson	Airborne (Airborne)	02:51:29	15	2	IN-10

Short Course Name	Horse	Time Elapsed	Total Pts	Place	Team #
Cheryl Ulsh	Tardy Two McCue (Tuxedo)	01:10:21	8	1	G
Joanne Coy	Duncan's Diamonds (Duncan)	01:10:21	8	1	G
Jessica Bates	Qui Anna	01:28:30	7	2	MI-7
Tonica Bates	Cinderfella Royal (Fella)	01:28:30	7	2	MI-7

**Long Course MI - D Bar D - 6/30/13 - Mgrs: Leigh Nelson/Janet Wenger**

Name	Horse	Time Elapsed	Total Pts	Place	Team #
Becki Ruh	Pete	00:59:20	16	1	MI-6
Dustin Sloan	Oh Whatta Whreck (Rex)	00:59:20	16	1	MI-6
Johnnie Sloan	Cool Mountain Breeze (Butte)	00:59:20	16	1	MI-6
Cindy Debiak	Gallant Spun Honey (Honey)	01:07:00	15	2	MI-2
Barbara Drake	Just A Country Classic (Ernie)	01:07:00	15	2	MI-2

Short Course Name	Horse	Time Elapsed	Total Pts	Place	Team #
Colleen Carson	Daisy	01:24:39	8	1	MI-32
Austin Carson	Blaze	01:24:39	8	1	MI-32

**Long Course MI - Ionia - 6/8/13 - Mgrs: Cindy Debiak/Rebecca Ferris**

Name	Horse	Time Elapsed	Total Pts	Place	Team #
Alison Bennett	IR Dakota Gold Dust (Dusty)	01:57:00	16	1	S
Barbara Drake	Just A Country Classic (Ernie)	02:16:18	15	2	MI-2
Linda Kraai	Mekas Dream (Meka)	02:16:18	15	2	MI-2
Bob Walker	Rain	02:16:18	15	2	G

Short Course Name	Horse	Time Elapsed	Total Pts	Place	Team #
John Debiak	Flame	01:35:02	8	1	G
Shelly Novakowski	Mountain Mans Kasey (Kasey)	01:35:02	8	1	G
Joanne Coy	Duncan's Diamonds (Duncan)	01:48:12	7	2	G
Cheryl Ulsh	Tardy Two McCue (Tuxedo)	01:48:12	7	2	G

**MI - Yankee Springs - 8/10/13 - Mgrs: Luann Huizinga/Trudi Reurink**

**Long Course**

Name	Horse	Time Elapsed	Total Pts	Place	Team #
Becki Ruh	Pete	02:26:45	16	1	MI-6
Dustin Sloan	Cool Mountain Breeze (Butte)	02:26:45	16	1	MI-6
Cindy Debiak	Gallant Spun Honey (Honey)	02:28:07	15	2	MI-2
Barbara Drake	Just A Country Classic (Ernie)	02:28:07	15	2	MI-2

Short Course Name	Horse	Time Elapsed	Total Pts	Place	Team #
Paul Collens	Rosie	01:21:10	8	1	G
Shelly Moore	Della	01:21:10	8	1	G
Wendy Petersen	unknown	01:45:15	7	2	G
Tom Petersen	unknown	01:45:15	7	2	G

**Long Course MI - Ionia - 6/9/13**

Name	Horse	Time Elapsed	Total Pts	Place	Team #
Patricia Richerson	Galeno de Ciente (Galeno)	01:40:43	16	1	IN-10
Theresa Serry	Wildfire	01:40:43	16	1	IN-10
Luann Huizinga	Savey (Savey)	02:00:29	15	2	MI-36
Deborah L Schrock	Ice	02:00:29	15	2	MI-36
Katelyn Potter	Captain Midnight's Rising Sun (Ace)	02:00:29	15	2	MI-36
Julie Reurink	Corval (Corval)	02:00:29	15	2	MI-36
Trudi Reurink	Sensational Rambo Cowboy (Bo)	02:00:29	15	2	MI-36

Short Course Name	Horse	Time Elapsed	Total Pts	Place	Team #
Linda Kraai	Mekas Dream (Meka)	01:33:09	8	1	MI-2
Barbara Drake	Just A Country Classic (Ernie)	01:33:09	8	1	MI-2
Dustin Sloan	Oh Whatta Wreck (Rex)	01:33:15	7	2	MI-6
Johnnie Sloan	Cool Mountain Breeze (Butte)	01:33:15	7	2	MI-6

**Long Course MI - Yankee Springs - 8/11/13**

Name	Horse	Time Elapsed	Total Pts	Place	Team #
Mia Grassmid	Savey (Savey)	03:36:22	16	1	G
Deborah L Schrock	Ice	03:36:22	16	1	MI-36
Julie Reurink	Blossom	03:36:22	16	1	MI-36
Kayla Masseling	Sensational Rambo Cowboy (Bo)	03:36:22	16	1	G
Katelyn Potter	Captain Midnight's Rising Sun (Ace)	03:36:22	16	1	MI-36
Barbara Drake	Just A Country Classic (Ernie)	03:38:16	15	2	MI-2
Cindy Debiak	Gallant Spun Honey (Honey)	03:38:16	15	2	MI-2

Short Course Name	Horse	Time Elapsed	Total Pts	Place	Team #
Shelly Moore	Della	01:51:13	8	1	G
Paul Collens	Rosie	01:51:13	8	1	G
Colleen Carson	Daisy	02:32:33	7	2	MI-32
Austin Carson	Blaze	02:32:33	7	2	MI-32

**MI - D Bar D Ranch - 6/29/13 - Mgrs: Valerie Kadzban/Janet Wenger**

**Long Course**

Name	Horse	Time Elapsed	Total Pts	Place	Team #
Cindy Debiak	Gallant Spun Honey (Honey)	01:02:53	16	1	MI-2
Barbara Drake	Just A Country Classic (Ernie)	01:02:53	16	1	MI-2
Becki Ruh	Pete	01:08:12	15	2	MI-6
Dustin Sloan	Oh Whatta Whreck (Rex)	01:08:12	15	2	MI-6
Johnnie Sloan	Cool Mountain Breeze (Butte)	01:08:12	15	2	MI-6

Short Course Name	Horse	Time Elapsed	Total Pts	Place	Team #
Colleen Carson	Daisy	01:33:04	8	1	MI-32
Austin Carson	Blaze	01:33:04	8	1	MI-32

**MI - Sleepy Hollow - 8/24/13 - Mgrs: Barbara Drake/Linda Kraai**

**Long Course**

Name	Horse	Time Elapsed	Total Pts	Place	Team #
Scott Leffingwell	April	03:22:00	7	0	G
Victoria Leffingwell	Finales Wicked Felina (Felina)	03:22:00	7	0	G
Billy Ruh	Bingo (Bingo)	01:32:00	6	0	G
Becki Ruh	Pete	01:53:10	16	1	MI-6
Johnnie Sloan	Cool Mountain Breeze (Butte)	01:53:10	16	1	MI-6
Dustin Sloan	Oh Whatta Wreck (Rex)	01:53:10	16	1	MI-6
Theresa Serry	Galeno de Ciente (Galeno)	01:58:24	15	2	IN-10
Patricia Richerson	Airborne (Airborne)	01:58:24	15	2	IN-10



**Long Course** *MI - Sleepy Hollow - 8/25/13*

Name	Horse	Time Elapsed	Total Pts	Place	Team #
Johnnie Sloan	Cool Mountain Breeze (Butte)	01:38:41	16	1	MI-6
Dustin Sloan	Oh Whatta Wreck (Rex)	01:38:41	16	1	MI-6
Becki Ruh	Pete	01:38:41	16	1	MI-6
Theresa Serry	Airborne (Airborne)	01:52:06	15	2	IN-10
Patricia Richerson	Galeno de Ciente (Galeno)	01:52:06	15	2	IN-10

Short Course Name	Horse	Time Elapsed	Total Pts	Place	Team #
Billy Ruh	Bingo (Bingo)	01:34:43	8	1	S
Scott Leffingwell	April	01:51:08	7	2	G
Victoria Leffingwell	Finales Wicked Felina (Felina)	01:51:08	7	2	G

**Long Course** *MI - Cummings Center - 9/14/13 - Mgr: Melissa Fox*

Name	Horse	Time Elapsed	Total Pts	Place	Team #
Barbara Drake	Just A Country Classic (Ernie)	01:36:33	16	1	MI-2
Donna McGill	Cruizinberry (Bear)	01:36:33	16	1	MI-2
Cindy Debiak	Gallant Spun Honey (Honey)	01:36:33	16	1	MI-2
John Debiak	Flame	01:36:33	16	1	MI-2
Christine Carlson	Una	01:36:33	16	1	MI-2
Bonny Wrobel	Sunny Poco Music (Sisco)	01:36:33	16	1	MI-2
Becki Ruh	Pete	01:38:34	15	2	MI-6
Dustin Sloan	Oh Whatta Wreck (Rex)	01:38:34	15	2	MI-6
Johnnie Sloan	Cool Mountain Breeze (Butte)	01:38:34	15	2	MI-6

Short Course Name	Horse	Time Elapsed	Total Pts	Place	Team #
Colleen Carson	Daisy	03:19:40	8	1	MI-32
Austin Carson	Blaze	03:19:40	8	1	MI-32
Cindy Hotz	xaos	02:42:57	6	2	S

**Long Course** *MI - Cummings Center - 9/15/13*

Name	Horse	Time Elapsed	Total Pts	Place	Team #
Johnnie Sloan	Cool Mountain Breeze (Butte)	01:06:54	16	1	MI-6
Dustin Sloan	Oh Whatta Wreck (Rex)	01:06:54	16	1	MI-6
Becki Ruh	Pete	01:06:54	16	1	MI-6
John Debiak	Flame	01:07:00	15	2	MI-2
Cindy Debiak	Gallant Spun Honey (Honey)	01:07:00	15	2	MI-2
Donna McGill	Cruizinberry (Bear)	01:07:00	15	2	MI-2
Barbara Drake	Just A Country Classic (Ernie)	01:07:00	15	2	MI-2

Short Course Name	Horse	Time Elapsed	Total Pts	Place	Team #
Mary Greiner	Misters T Time	01:32:00	8	1	S
Cindy Hotz	xaos	01:38:00	7	2	S

**Long Course** *MI - Ft. Custer - 10/12/13 - Mgrs: Becki Ruh/Johnnie Sloan*

Name	Horse	Time Elapsed	Total Pts	Place	Team #
Linda Kraai	Cool Mountain Breeze (Butte)	03:38:03	16	1	MI-2
Cindy Debiak	Gallant Spun Honey (Honey)	03:38:03	16	1	MI-2
John Debiak	Flame	03:38:03	16	1	MI-2
Barbara Drake	Just A Country Classic (Ernie)	03:38:03	16	1	MI-2
Robin Dilg	Strykers Threat (Stryker)	03:52:30	15	2	MI-14
Janet Wenger	Phsyhic Gumption (Gump)	03:52:30	15	2	MI-14
Leigh Nelson	Chester's Grant (Chester)	03:52:30	15	2	MI-14

Short Course Name	Horse	Time Elapsed	Total Pts	Place	Team #
Billy Ruh	Bingo (Bingo)	01:52:23	8	1	S
Melissa Fox	Willow	01:59:07	7	2	MI-37
Randall Fox	Legend	01:59:07	7	2	MI-37

**Long Course** *MI - Ft. Custer - 10/13/13*

Name	Horse	Time Elapsed	Total Pts	Place	Team #
Deborah L Schrock	Ice	02:36:47	16	1	MI-36
Trudi Reurink	Captain Midnight's Rising Sun (Ace)	02:36:47	16	1	MI-36
Luann Huizinga	Berry (Berry)	02:36:47	16	1	MI-36
Kayla Masselink	Sensational Rambo Cowboy (Bo)	02:36:47	16	1	MI-36
Katelyn Potter	Crissie (Crissie)	02:36:47	16	1	MI-36
Julie Reurink	Corval (Corval)	02:36:47	16	1	MI-36
Barbara Drake	Just A Country Classic (Ernie)	03:03:32	0	2	MI-2

Short Course Name	Horse	Time Elapsed	Total Pts	Place	Team #
John Debiak	Flame	03:03:32	15	2	MI-2
Cindy Debiak	Gallant Spun Honey (Honey)	03:03:32	15	2	MI-2
Linda Kraai	Pete	03:03:32	15	2	MI-2

Short Course Name	Horse	Time Elapsed	Total Pts	Place	Team #
Billy Ruh	Bingo (Bingo)	01:24:24	8	1	S
Patricia Richerson	Airborne (Airborne)	01:28:04	7	2	S

**MI - YMCA Camp Eberhart - 10/19/13 - Mgrs: Vicki Horsley/Shellie Hochstetler**

Long Course Name	Horse	Time Elapsed	Total Pts	Place	Team #
Linda Kraai	Rocket	01:53:33	16	1	MI-2
Donna McGill	Cruizinberry (Bear)	01:53:33	16	1	MI-2
Cindy Debiak	Gallant Spun Honey (Honey)	01:53:33	16	1	MI-2
Katelyn Potter	Crissie (Crissie)	02:07:21	15	2	MI-36
Julie Reurink	Corval (Corval)	02:07:21	15	2	MI-36
Trudi Reurink	Sensational Rambo Cowboy (Bo)	02:07:21	15	2	MI-36

Short Course Name	Horse	Time Elapsed	Total Pts	Place	Team #
Deborah L Schrock	Ice	02:07:21	15	2	MI-36
Luann Huizinga	Savey (Savey)	02:07:21	15	2	MI-36

Short Course Name	Horse	Time Elapsed	Total Pts	Place	Team #
Patricia Richerson	Airborne (Airborne)	02:18:47	8	1	S
Austin Carson	Blaze	02:49:05	7	2	MI-32
Colleen Carson	Daisy	02:49:05	7	2	MI-32

**Long Course** *MI - YMCA Camp Eberhart - 10/20/13*

Name	Horse	Time Elapsed	Total Pts	Place	Team #
Linda Kraai	Rocket	01:59:05	16	1	MI-2
Donna McGill	Cruizinberry (Bear)	01:59:05	16	1	MI-2
Cindy Debiak	Gallant Spun Honey (Honey)	01:59:05	16	1	MI-2
Melissa Fox	Willow	02:04:17	15	2	S

Short Course Name	Horse	Time Elapsed	Total Pts	Place	Team #
Billy Ruh	Little Trusty Rusty (Rusty)	00:41:48	8	1	S
Patricia Richerson	Airborne (Airborne)	01:06:36	7	2	S







## MINNESOTA/WISCONSIN

Jim Klein - MN Director  
Lisa Kaiser - WI Director

# Minnesota/Wisconsin 2013 Highlight Reel

by Jim Klein - WI Director

**Weather wise**, once again starting out the spring was a bit away from normal as we had snow still falling for quite a ways into the month of May. Usually we are able to get our first ride of the season in on about the last weekend of April. However, this year we delayed and then delayed some more and ended up with Memorial weekend at Wolf Creek being the grand opening.

One of the interesting moments for this weekend was during set up. I was hiking through the woods quietly, I guess, when I walked up on a couple of small bear cubs. First thought.... That's really cool... Second thought... where is mom? I don't think she saw me but she knew I was there and whatever signal she sent to the cubs had one of them scamper up a big cottonwood as fast as could be. Third thought... back away slowly to way I came in and give them a wide go-around. Back on the trail I let the horse folks that I encountered know about the location of the bruins. The rides went off without a hitch and sure was fun to see all of our friends once again.

The next ride was at Zumbro, which is always one of the premier places to ride. Lots of elevation to consider when planning your route. Early 2013, lots of wet spots, too. This made for some changes in strategy for most of us as to which routes to take. One really hard objective on Sunday in the rain made most of us wonder if we needed to apply the "no fun rule", especially with torrents of rain washing away all of the ambition we normally have. But, Connie Brown and the team of Paige and the 2 Jessica's found it and we are glad they did.

Onto Henderson, at a county campground that we all really enjoy. The trails are compact and maze like.

Almost every circle will have multiple trails so the riders have to be on their toes to read clues carefully to see if there is any indication on how to choose a trail. And, just to make it more interesting the river decided to be at flood stage so there were no crossings allowed and the ride managers had to improvise by moving all of the objectives to the near side of the water. Still it was a great weekend for us all as all of the times were compressed with the shorter distances.

Our next event was a first, the first CMO held in Iowa. John, Betty and Keith Newton did a wonderful job in getting the word out for the horse community as they attracted a huge turnout for their ride. Lots of first time riders and they all had fun. The veterans had to be on their best as the locals sure knew a lot about the park. The riders on Saturday headed south and looped through some very interesting river bottoms along the Des Moines River. Then on Sunday's ride the trails headed in a completely different direction on all new trails in the higher lands along Brushy Creek. Were those trout we had to guide our horses around? We hope to see all of those lowans again sometime. Maybe they will be a new chapter some day.

Then, in the heat of August we all headed up north to Solon Springs. I don't know why but the heat wave broke for the weekend and made for a delightful cool and dry weekend on the north prairie at the Bird Sanctuary. The area is fairly large but is way different than most of the north woods. This spot is wide-open space with various wooded plots scattered around the lakes and wetlands. It almost seems like sagebrush, and in my mind might have

been what the real cowboys had to contend with in most wild west adventures. Read your clues carefully as there are lots of very close to alike landmarks in this park. The nights were very quiet and starry. Beautiful.

Bremer Creek, what else is there to say. The place to ponder the howl of the coyotes and the babbling creek every night. The chicken dinner that you will never forget. Some of the steepest trails our flatlander horses have to contend with. Many deer to watch out for. Ride smart and every team has a chance here.

Labor Day was already upon us and we made the best of the weekend as we once again came to Governor Knowles State Forest. Where did the summer go? No time to think about that as this course has to be one of the most familiar to most of the riders and everyone is fast here. One slow objective will be all it takes to knock a team back a few places. The river trail is still one of my all time favorites and most of the horses get giddy when they get on this windy trail. When our team opened up a little here, we all were laughing at the fun we were having. Due to the weather, the ride managers decided to flip the Saturday and Sunday rides so to fit between possible rains. It all worked out nicely for the rides but we had to work around some showers for our potluck dinner. Friday's campfire was terrific as we were all expecting a washout per the forecast. Turned out, the clouds divided just for our camp and the stars (even several shooting stars) were out for the early evening.

Our group was back in Bloomer again in September. This camp is within the Hay Meadow flowage surrounded by many lakes and wetlands. The trails in the woods are beautiful in the fall as the colors start to come into bloom. There are many users of these trails during the various seasons. There are skiers and snowmobiles in the winter months, bikers and hikers during summer. In addition, of course we horse people that all share in the area. Riders here have to be careful to respect trails that are for the others. The local horse club main-

See ► **Highlight Reel**, P15



## ► Highlight Reel

From Page 14

tains this camp and we appreciate their continued upkeep. Turnout was good and we did have some newbies come and try our game.

Always a favorite, October at Kennedy Mills was well attended albeit the weather forecast kept a few Friday nighters away. But, they came out on Saturday and a great time was had by all. The Denzers kept us busy having a 2-map ride for the long course on both days. A 2-map ride is just that. When you finish the first map and get back to camp you get another one handed to you and you have to go back out and complete the days ride. It is always interesting when your horse looks at you and says "gee, I thought we were done" as you leave camp for that second go around. On Saturday night, the managers held a midnight poker run on the lighted trails. Well, half of the ways was lighted. I'm sure glad we bumped into someone with a flashlight half way around. The party truck drove the trail for the poker run and had a crowd that rode in the bed. The rest walked.

Last ride of the season was at Crow-Hassen County Park. There was a Halloween theme during the ride and at the campfire, the ride managers had a costume and pumpkin-carving contest. This ride usually has a good attendance and this time did not disappoint. We had some riders that we hadn't seen for years and years. We had many new comers that wanted to try the game. Cold temps in the evenings made for some large campfires to keep everyone warmed. Pot luck dinner was centered around a couple of kinds of Chile and everyone needed that to help warm up after a great day of riding. We did have one run away horse that had to be tracked down and with the cooperation of some of the riders along with the local sheriff was found at a residence not too far away and easy to get a trailer over there to bring him home. Times were close at the end and I think that everyone was happy with a great end to the season.

My many thanks go out to all of the Ride Managers this year. It was an exciting season and as always, I am sorry that it has to end. ■

### MN/WI - Pattis Camp (WI) - 5/25/13 - Mgrs: Jim & Wendy Klein

Long Course						
Name	Horse	Time Elapsed	Total Pts	Place	Team #	
Connie Brown	Sunny	03:21:03	16	1	S	
Kip Gore	Ritz	03:25:02	15	2	WI-02	
Julie Gore	Rigby	03:25:02	15	2	WI-02	
Short Course						
Name	Horse	Time Elapsed	Total Pts	Place	Team #	
Carole Thuringer	RTR Thunder Lord (Blackie)	02:49:46	8	1	WI-20	
Zoe Thuringer	RA Sweet William (Willie)	02:49:46	8	1	WI-20	
Linnea Engstrom	Chumley	02:57:47	7	2	WI-24	
Kaisa Engstrom	Chica	02:57:47	7	2	WI-24	

### MN/WI - Pattis Camp (WI) - 5/26/13

Long Course						
Name	Horse	Time Elapsed	Total Pts	Place	Team #	
Kip Gore	Ritz	02:54:33	16	1	WI-02	
Julie Gore	Rigby	02:54:33	16	1	WI-02	
Lisa Kaiser	Skeeter	03:07:35	15	2	WI-16	
Linda Weber	Bob	03:07:35	15	2	WI-16	
Casey Kaiser	Nizzon	03:07:35	15	2	WI-16	
Short Course						
Name	Horse	Time Elapsed	Total Pts	Place	Team #	
Carole Thuringer	RTR Thunder Lord (Blackie)	01:52:18	8	1	WI-20	
Zoe Thuringer	RA Sweet William (Willie)	01:52:18	8	1	WI-20	
Ron Baillargeon	Gus	02:03:30	7	2	WI-05	
Janice Frawley	Simon	02:03:30	7	2	WI-05	

### Long Course MN/WI - Zumbro Bottoms (MN) - 6/8/13 - Mgrs: Clay & Marlys Kraus

Long Course						
Name	Horse	Time Elapsed	Total Pts	Place	Team #	
Jim Klein	Lancer	03:08:02	16	1	S	
Connie Brown	Sunny	03:47:10	15	2	S	
Short Course						
Name	Horse	Time Elapsed	Total Pts	Place	Team #	
Paige Wallery	Magic	04:30:37	7	1	WI-22	
Jessica Brown	Lester	04:30:37	7	1	WI-22	
Jessica Oldroyd	Rosie	04:30:37	7	1	WI-22	

### MN/WI - Zumbro Bottoms - 6/9/13

Long Course						
Name	Horse	Time Elapsed	Total Pts	Place	Team #	
Connie Brown	Sunny	03:28:00	16	1	S	
Vicky O'Connor	George	03:45:15	14	2	S	
Short Course						
Name	Horse	Time Elapsed	Total Pts	Place	Team #	
Paige Wallery	Magic	02:50:10	7	1	WI-22	
Jessica Brown	Lester	02:50:10	7	1	WI-22	
Jessica Oldroyd	Rosie	02:50:10	7	1	WI-22	
Lori Morlan	Rockin Lena (Rocky)	01:49:08	2	2	S	

### Long Course MN/WI - Rush River (MN) - 6/22/13 - Mgrs: Connie & Robert Brown

Long Course						
Name	Horse	Time Elapsed	Total Pts	Place	Team #	
Denny Thompson	Willy	00:50:37	16	1	S	
Jim Klein	Lancer	01:05:35	15	2	MN-03	
Marlys Kraus	Double Dutch	01:05:35	15	2	MN-03	
Clay Kraus	Gens High Threat (Ace)	01:05:35	15	2	MN-03	

### Long Course MN/WI - Rush River (MN) - 6/23/13

Long Course						
Name	Horse	Time Elapsed	Total Pts	Place	Team #	
Jim Klein	Lancer	00:47:53	16	1	MN-03	
Marlys Kraus	Double Dutch	00:47:53	16	1	MN-03	
Clay Kraus	Gens High Threat (Ace)	00:47:53	16	1	MN-03	
Dan Wallery	Pilgrims Spirit (Pilgrim)	01:06:52	15	2	WI-25	
John Swingle	Jeb	01:06:52	15	2	WI-25	





**MN/WI - Brushy Creek (IA) - 7/20/13 - Mgrs: Betty & John Newton**

Long Course Name	Horse	Time Elapsed	Total Pts	Place	Team #
Casey Kaiser	Skeeter	02:28:00	16	1	WI-03
Patricia Kopp	Mozzie	02:28:00	16	1	WI-03
Linda Weber	Bob	02:28:00	16	1	WI-03
Jim Klein	Lancer	02:33:21	15	2	MN-03
Marlys Kraus	Double Dutch	02:33:21	15	2	MN-03
Clay Kraus	Zack	02:33:21	15	2	MN-03

**MN/WI - Brushy Creek (IA) - 7/21/13**

Name	Horse	Time Elapsed	Total Pts	Place	Team #
Jim Klein	Lancer	02:14:13	16	1	S
Roland Newton	Shadow's Lady Dancer (Lady)	02:18:58	15	2	IA-01
Norma Newton	Cherokee Chic (Blazer)	02:18:58	15	2	IA-01

Short Course Name	Horse	Time Elapsed	Total Pts	Place	Team #
Zoe Thuringer	RA Sweet William (Willie)	01:07:09	8	1	WI-20
Carole Thuringer	RTR Thunder Lord (Blackie)	01:07:09	8	1	WI-20
Tina Strauss	Ruby	01:07:09	8	1	WI-20
Karen Glock	Opi	01:48:02	7	2	G
Nolan Glock	Gainer	01:48:02	7	2	G
Quinn Glock	Princess	01:48:02	7	2	G

**MN/WI - Bird Sanctuary (WI) - 8/3/13 - Mgrs: Lori Morlan/Sami Mozey**

Long Course Name	Horse	Time Elapsed	Total Pts	Place	Team #
Jim Klein	Lancer	02:50:00	16	1	S
Kim Christianson	Ebony	04:45:00	13	2	G
Annette Griffith	Dani	04:45:00	13	2	G

Short Course Name	Horse	Time Elapsed	Total Pts	Place	Team #
Cris Fern	Cisco	02:50:00	8	1	WI-07
Taylor Fern	Junebug	02:50:00	8	1	WI-07

**MN/WI - Bird Sanctuary (WI) - 8/4/13**

Name	Horse	Time Elapsed	Total Pts	Place	Team #
Jim Klein	Lancer	02:34:00	16	1	S
John Swingle	Jeb	04:10:00	16	2	S

Short Course Name	Horse	Time Elapsed	Total Pts	Place	Team #
Cris Fern	Cisco	02:06:00	8	1	WI-07
Taylor Fern	Junebug	02:06:00	8	1	WI-07
Liz Fredric	Fella	02:15:00	6	2	G
Jane Eimer	Dasher	02:15:00	6	2	G
Vicky Koepke	Dandy	02:15:00	6	2	G

**MN/WI - Bremer Crk.(WI) - 8/17/13 - Mgrs: Connie Brown/Sheree Nelson**

Long Course Name	Horse	Time Elapsed	Total Pts	Place	Team #
Dan Wallery	Pilgrims Spirit (Pilgrim)	01:48:24	16	1	WI-23
Robert Brown	Jane	01:48:24	16	1	WI-23
John Swingle	Jeb	01:48:24	16	1	WI-23
Marlys Kraus	Double Dutch	02:12:53	15	2	MN-03
Clay Kraus	Zack	02:12:53	15	2	MN-03
Jim Klein	Lancer	02:12:53	15	2	MN-03

Short Course Name	Horse	Time Elapsed	Total Pts	Place	Team #
Cris Fern	Buster	02:30:15	8	1	WI-07
Taylor Fern	Junebug	02:30:15	8	1	WI-07
Paige Wallery	Magic	02:30:15	8	1	WI-07
London Schultz	Toll Free TMC (TC)	02:48:26	7	2	MN-02
Dustie Thorbergson	Jolly Old Man (Snoopy)	02:48:26	7	2	MN-02
Kate Shaw	Seek A Gold Benito (Ben)	02:48:26	7	2	MN-02

**MN/WI - Bremer Crk.(WI) - 8/18/13**

Long Course Name	Horse	Time Elapsed	Total Pts	Place	Team #
Julie Gore	Rigby	01:17:11	16	1	G
John Swingle	Jeb	01:17:11	16	1	G
Jim Klein	Lancer	01:22:29	15	2	G
Vicky O'Connor	George	01:22:29	15	2	G

Short Course Name	Horse	Time Elapsed	Total Pts	Place	Team #
Cris Fern	Buster	00:43:25	8	1	WI-07
Taylor Fern	Junebug	00:43:25	8	1	WI-07
Paige Wallery	Magic	00:43:25	8	1	WI-07
Carole Thuringer	RTR Thunder Lord (Blackie)	00:52:17	7	2	WI-20
Zoe Thuringer	RA Sweet William (Willie)	00:52:17	7	2	WI-20

**MN/WI - Pattis Camp (WI) - 8/31/13 - Mgrs: Julie & Kip Gore**

Long Course Name	Horse	Time Elapsed	Total Pts	Place	Team #
Jim Klein	Lancer	02:04:49	16	1	MN-03
Clay Kraus	Zack	02:04:49	16	1	MN-03
Marlys Kraus	Double Dutch	02:04:49	16	1	MN-03
Robert Brown	Jane	02:36:49	15	2	WI-23
Dan Wallery	Pilgrims Spirit (Pilgrim)	02:36:49	15	2	WI-23

Short Course Name	Horse	Time Elapsed	Total Pts	Place	Team #
Ron Baillargeon	Grady (Grady)	01:36:02	8	1	WI-05
Janice Frawley	Mazie	01:36:02	8	1	WI-05

**MN/WI - Pattis Camp (WI) - 9/1/13**

Long Course Name	Horse	Time Elapsed	Total Pts	Place	Team #
Kate Shaw	Puttz	02:32:23	16	1	MN-25
Vicky O'Connor	George	02:32:23	16	1	MN-25
Jim Klein	Lancer	03:37:15	15	2	MN-03
Marlys Kraus	Double Dutch	03:37:15	15	2	MN-03
Clay Kraus	Zack	03:37:15	15	2	MN-03

Short Course Name	Horse	Time Elapsed	Total Pts	Place	Team #
Laura Fern	Buster	02:34:00	8	1	WI-26
Jenna Achterhof	Chip (Chip)	02:34:00	8	1	WI-26
Ron Baillargeon	Gus	02:40:00	6	2	WI-05
Janice Frawley	Grady (Grady)	02:40:00	6	2	WI-05
Vicki Baillargeon	Mazie	02:40:00	6	2	WI-05

**MN/WI - Hay Meadow (WI) - 9/21/13 - Mgrs: Lisa Kaiser/Linda Weber**

Long Course Name	Horse	Time Elapsed	Total Pts	Place	Team #
Jim Klein	Lancer	02:34:05	16	1	S
Norma Newton	Cherokee Chic (Blazer)	02:55:43	15	2	IA-01
Roland Newton	Shadow's Lady Dancer (Lady)	02:55:43	15	2	IA-01

Short Course Name	Horse	Time Elapsed	Total Pts	Place	Team #
Tina Fern-Denzer	Cisco	01:27:47	8	1	G
Sami Mozey	Chase	01:27:47	8	1	G
Cris Fern	Junebug	01:40:29	7	2	WI-07
Paige Wallery	Magic	01:40:29	7	2	WI-07
Jessica Oldroyd	Sundance	01:40:29	7	2	WI-07

**MN/WI - Hay Meadow (WI) - 9/22/13**

Long Course Name	Horse	Time Elapsed	Total Pts	Place	Team #
Jim Klein	Lancer	02:24:30	16	1	MN-03
Clay Kraus	Zack	02:24:30	16	1	MN-03
Marlys Kraus	Double Dutch	02:24:30	16	1	MN-03
Kip Gore	Ritz	03:05:40	15	2	WI-02
Julie Gore	Rigby	03:05:40	15	2	WI-02

Short Course Name	Horse	Time Elapsed	Total Pts	Place	Team #
Tina Fern-Denzer	Cisco	01:57:47	8	1	G
Sami Mozey	Chase	01:57:47	8	1	G
Paige Wallery	Magic	02:19:47	7	2	WI-07
Jessica Oldroyd	Sundance	02:19:47	7	2	WI-07
Taylor Fern	Junebug	02:19:47	7	2	WI-07



**MN/WI - Kennedy Mills (WI) - 10/5/13 - Mgrs: Tina Fern-Denzer/Travis Denzer**

Long Course Name	Horse	Time Elapsed	Total Pts	Place	Team #
Julie Gore	Rigby	01:51:35	16	1	S
Vicky O'Connor	George	02:03:50	15	2	S
Short Course Name	Horse	Time Elapsed	Total Pts	Place	Team #
Cris Fern	Cisco	01:50:03	8	1	WI-07
Taylor Fern	Junebug	01:50:03	8	1	WI-07
Paige Wallery	Magic	01:50:03	8	1	WI-07
Jenna Achterhof	Chip (Chip)	02:29:20	7	2	WI-26
Laura Fern	Buster	02:29:20	7	2	WI-26

**MN/WI - Kennedy Mills (WI) - 10/6/13**

Long Course Name	Horse	Time Elapsed	Total Pts	Place	Team #
Jim Klein	Lancer	01:34:57	16	1	G
Vicky O'Connor	George	01:34:57	16	1	G
Dan Wallery	Pilgrims Spirit (Pilgrim)	02:01:37	15	2	WI-25
John Swingle	Jeb	02:01:37	15	2	WI-25
Short Course Name	Horse	Time Elapsed	Total Pts	Place	Team #
Cris Fern	Cisco	01:09:51	8	1	WI-07
Taylor Fern	Junebug	01:09:51	8	1	WI-07
Paige Wallery	Magic	01:09:51	8	1	WI-07
Dustie Thorbergson	Jolly Old Man (Snoopy)	01:47:30	7	2	MN-02
Kate Shaw	Seek A Gold Benito (Ben)	01:47:30	7	2	MN-02
London Schultz	Toll Free TMC (TC)	01:47:30	7	2	MN-02

**MN/WI - Crow Hassan (MN) - 10/26/13 - Mgrs: Vicky O'Connor/Kate Shaw**

Long Course Name	Name	Horse	Time Elapsed	Total Pts	Place	Team #
	Jim Klein	Lancer	02:05:25	16	1	MN-03
	Marlys Kraus	Double Dutch	02:05:25	16	1	MN-03
	Connie Brown	Cheyenne	02:05:25	16	1	MN-03
	Norma Newton	Cherokee Chic (Blazer)	02:08:10	15	2	IA-01
	Roland Newton	Shadow's Lady Dancer (Lady)	02:08:10	15	2	IA-01
Short Course Name	Name	Horse	Time Elapsed	Total Pts	Place	Team #
	Dustie Thorbergson	Jolly Old Man (Snoopy)	01:48:38	8	1	MN-02
	Brianna Thorbergson	Seek A Gold Benito (Ben)	01:48:38	8	1	MN-02
	Amelia Lehnert	George	01:48:38	8	1	MN-02
	London Schultz	Toll Free TMC (TC)	01:48:38	8	1	MN-02

**MN/WI - Crow Hassan (MN) - 10/27/13**

Long Course Name	Name	Horse	Time Elapsed	Total Pts	Place	Team #
	Jim Klein	Lancer	02:11:20	16	1	MN-03
	Marlys Kraus	Double Dutch	02:11:20	16	1	MN-03
	Megan Youngs	Cheyenne	02:11:20	16	1	MN-03
	Casey Kaiser	Nizzon	02:23:19	15	2	WI-16
	Lisa Kaiser	Skeeter	02:23:19	15	2	WI-16
Short Course Name	Name	Horse	Time Elapsed	Total Pts	Place	Team #
	John Joos	Leroy	01:18:05	8	1	MN-01
	Kim Joos	Pusher's Pride of Stanley (Stanley)	01:18:05	8	1	MN-01
	Andrea Cronk	unknown horse	01:21:10	7	2	WI-26
	Jenna Achterhof	Rosie	01:21:10	7	2	WI-26
	Laura Fern	Pusher's Pride of Stanley (Stanley)	01:21:10	7	2	WI-26

# Winterize Your Horse

**Make sure your horse is ready for the cold temperatures ahead!**

by Colleen Cathcart - IL Director

With winter approaching and temps dropping, now is the ideal time to think about how to winterize your horse. During the winter, horse owners need to pay special attention to feed, water and shelter to ensure their horses stay healthy and comfortable.

Let's start with feed. Horses' nutrient requirements tend to increase when temps drop, so you may need to adjust your horse's feed rations. When doing so, keep in mind that feeding corn and other grains doesn't keep a horse warmer; it simply provides more energy via calories. Feeding good quality hay, which contains more fiber than grain, does more to keep your horse warm, since more heat is released during digestion of fiber than grain starches. On a "good day", your horse needs at least 1% of his body weight per day in roughage to maintain a healthy GI tract. But on a frigid winter day, he may need 2% or more, especially if he lives outdoors.

Alright, so you've laid in a supply of hay, but even the best quality hay won't have much benefit to your horse if his mouth isn't in good condition. Check your horse's teeth. It is a myth that "his teeth are just fine, because he never drops feed when he chews." The only reliable way to ensure that your horse doesn't have sharp edges or uneven wear-patterns on his teeth (the presence of which can affect the way he chews and digests food) is to have them checked.

Next, make sure your horse has a good water source. Water should always be accessible to your horse, and snow is never a substitute for water. A 1,000 pound horse needs 10 - 12 gallons per day, and if the water is between 45 - 65 degrees, that is ideal. If the water is very cold, your horse may drink less. Be aware that inadequate water intake is a common cause of impaction colic during winter.

Another thing to consider is shelter. While freezing temps make us humans head indoors to sit by the fire, horses typically adjust to colder temperatures with little difficulty. In fact, horses are usually happier (and perhaps healthier) living outside - especially if allowed to grow a full winter coat. In the absence of wind or moisture, horses can tolerate zero-degree temps, and even colder. Add in wet weather and wind to those cold temps, however, and a horse's energy needs will greatly increase unless provided with shelter. Resist the urge to blanket your horse, as blankets tend to compress and mat-down the haircoat, thus diminishing its insulative properties. A small, three-sided shed (with the open-side opposite of prevailing winds), is typically sufficient shelter for pastured horses, and will enable them to minimize the effects of strong winds, snow or ice. The result will usually be that your horse will require less feed, can more easily maintain body weight, and will be less stressed.

So don't take your horse's health for granted this winter. With a little planning, and extra attention to feed, water and shelter, your horse will make it comfortably through the winter and be ready to CMO next spring! ■



# NEW JERSEY PENNSYLVANIA

Janet Citron - Director



Greetings from the North East!

**We have** had a wonderful season so far, with the last ride coming up on December 15. We've had great weather for all our rides, and some excellent fixtures to ride at.

Injuries have sidelined a couple of members. Scott Arndt broke his leg earlier in the season, but is now back in the saddle, and Ride Manager Sandy Greisel took a hard bounce off her horse, put a few cracks in her bones, but was seen at a recent ride on crutches, keeping ride manager Janice Elsishans company throughout the day.

We have a few teams that have been pretty competitive this season and are in the top 15 on the national statistics including Poconoc Pony Express, Triperfecta, and Cross Country Explorers. Also our Individual rider Steve Luoni is in 20th place nationally, as of this writing.

As Regional Director, and National Secretary, and Ride Manager I get to enjoy the different levels of NACMO. My goal is to someday get out to the other side of the country and participate in a ride there.

*Janet*



◀ Our mentors Mike and Jean Nonnemaker



Sandy Greisel at ▶ Ghoulish Gallop



Our Newbies Scott and ▶ Melissa Himmelreich



**Long Course NJ/PA - Bucks County (PA) - 4/27/13 - Mgr: Noelle Vanderbrink**

Name	Horse	Time Elapsed	Total Pts	Place	Team #
Janice MacKenzie	Caution Light (Pav)	01:04:00	16	1	PA-4
Sheila Gallagher	Top Hat Toby (Toby)	01:04:00	16	1	PA-4
Sherrie Hilliard	Dac's Moonraker (Moonie)	01:04:00	16	1	PA-4
Janet Citron	Partner	02:04:00	15	2	PA-7
Jennifer Wilson	Jr. Hazard (Sonny)	02:04:00	15	2	PA-7
Chris Geller	Hay Bills (Billy)	02:04:00	15	2	PA-7
Jeanne Zoppel	Pull in Rank (Muffin)	02:04:00	15	2	PA-7
Deborah Camplone	Cal Shining Star (Sean)	02:04:00	15	2	PA-7

**Long Course NJ/PA - Blue Marsh (PA) - 5/5/13 - Mgr: Janet Citron**

Name	Horse	Time Elapsed	Total Pts	Place	Team #
Sherrie Hilliard	Blue Traveler (Blue)	01:50:00	16	1	PA-4
Sheila Gallagher	Top Hat Toby (Toby)	01:50:00	16	1	PA-4
Janice MacKenzie	Caution Light (Pav)	01:50:00	16	1	PA-4
Gregory Elliot	Amarillo (Armarillo)	02:33:00	15	2	PA-13
Lloyd Gillen	Lonestar	02:33:00	15	2	PA-13
Rhonda Gillen	Lightning (Lightning)	02:33:00	15	2	PA-13
Tiffany Pinkerton	Charco (Charco)	02:33:00	15	2	PA-13

**Long Course NJ/PA - Mahlon Dickerson (NJ) - 6/16/13 - Mgr: Steve Luoni**

Name	Horse	Time Elapsed	Total Pts	Place	Team #
Martina Williams	Yogi	02:51:00	14	1	PA-9
Sandy Griesel	TNT (Tag)	02:51:00	14	1	PA-9
Jen Stoudt	Trevor	02:51:00	14	1	PA-9
Janet Citron	Partner	03:05:00	13	2	PA-7
Jennifer Wilson	Jr. Hazard (Sonny)	03:05:00	13	2	PA-7
Deborah Camplone	Cal Shining Star (Sean)	03:05:00	13	2	PA-7

**NJ/PA - Auburn Lookout (PA) - 7/21/13 - Mgrs: Jen Stoudt/Martina Williams**

Name	Horse	Time Elapsed	Total Pts	Place	Team #
Janet Citron	Partner	05:13:00	0	0	G
Rhonda Gillen	Lightning (Lightning)	03:08:18	16	1	PA-13
Lloyd Gillen	Lonestar	03:08:18	16	1	PA-13
Gregory Elliot	Amarillo	03:08:18	16	1	PA-13
Tiffany Pinkerton	Foxy	03:08:18	16	1	PA-13
Janice MacKenzie	Blue Traveler (Blue)	03:17:27	15	2	PA-4
Sherrie Hilliard	Dac's Moonraker (Moonie)	03:17:27	15	2	PA-4

**Long Course NJ/PA - Blue Marsh (PA) - 8/4/13 - Mgr: Janet Citron**

Name	Horse	Time Elapsed	Total Pts	Place	Team #
Rhonda Gillen	Lightning (Lightning)	01:55:00	16	1	PA-13
Tiffany Pinkerton	Charco (Charco)	01:55:00	16	1	PA-13
Gregory Elliot	Amarillo (Armarillo)	01:55:00	16	1	PA-13
Lloyd Gillen	Lonestar	01:55:00	16	1	PA-13
Jennifer Wilson	Jr. Hazard (Sonny)	02:56:00	15	2	PA-7
Deborah Camplone	Cal Shining Star (Sean)	02:56:00	15	2	PA-7

**NJ/PA - Jacobsburg Park (PA) - 9/15/13 - Mgrs: Jean & Michael Nonnemaker**

Name	Horse	Time Elapsed	Total Pts	Place	Team #
Jen Stoudt	Trevor	02:26:00	16	1	PA-9
Sandy Griesel	TNT (Tag)	02:26:00	16	1	PA-9
Martina Williams	Yogi	02:26:00	16	1	PA-9
Sheila Gallagher	Caution Light (Pav)	03:01:00	15	2	PA-4
Sherrie Hilliard	Dac's Moonraker (Moonie)	03:01:00	15	2	PA-4

**NJ/PA - Hawk Mt. (PA) - 10/27/13 - Mgrs: Janet Citron/Sandy Griesel**

Name	Horse	Time Elapsed	Total Pts	Place	Team #
Janice MacKenzie	Caution Light (Pav)	03:22:00	2	0	PA-4
Jamie MacCallum	Unknown	03:22:00	2	0	G
Sherrie Hilliard	Blue Traveler (Blue)	03:22:00	2	0	PA-4
Jen Stoudt	RIO (RIO)	02:50:00	16	1	PA-9
Martina Williams	Yogi	02:50:00	16	1	PA-9
Lloyd Gillen	Lonestar	04:55:00	15	2	PA-13
Rhonda Gillen	Lightning (Lightning)	04:55:00	15	2	PA-13
Tiffany Pinkerton	Charco (Charco)	04:55:00	15	2	PA-13
Gregory Elliot	Amarillo (Armarillo)	04:55:00	15	2	PA-13

**Long Course NJ/PA - Mahlon Dickerson (NJ) - 11/3/13 - Mgr: Janice Elshans**

Name	Horse	Time Elapsed	Total Pts	Place	Team #
Jen Stoudt	RIO (RIO)	03:40:00	16	1	PA-9
Martina Williams	Yogi	03:40:00	16	1	PA-9
Rhonda Gillen	Lightning (Lightning)	05:00:00	15	2	PA-13
Gregory Elliot	Amarillo (Armarillo)	05:00:00	15	2	PA-13
Lloyd Gillen	Lonestar	05:00:00	15	2	PA-13
Tiffany Pinkerton	Charco (Charco)	05:00:00	15	2	PA-13



Scott Arndt and Jenn Wilson at Ghoulish Gallop ▲





# WASHINGTON

Donna Amos - WA Director

## Long Course WA - Port Gamble - 11/3/13 - Mgr: Desiree Williams

Name	Horse	Time Elapsed	Total Pts	Place	Team #
Kathy Davis	Ellies Lil FireFeet	01:52:12	16	1	S
Pat Merriman	Bay Kasha (Kasha)	02:03:08	15	2	WA-1
Tami Merriman	Aramus	02:03:08	15	2	WA-1
Short Course					
Name	Horse	Time Elapsed	Total Pts	Place	Team #
Christine Wuifert	Leroy	01:59:05	8	1	WA-39
Kelly LaFleur	Wilbur/Rosalina	01:59:05	8	1	WA-39
Sandra Kingshott	Pushers Classic Mocha (Mochie)	02:30:10	7	2	WA-15
Cody Jacobs	Dominique Del Sol	02:30:10	7	2	WA-15

## Long Course WA - Scatter Creek - 3/23/13 - Mgr: Kathy Davis

Name	Horse	Time Elapsed	Total Pts	Place	Team #
Ross Tillotson	San Leo Thunder (Canuck)	03:02:17	16	1	WA-23
Sarah Tillotson	Kinnikinnick Benkei (Idaho)	03:02:17	16	1	WA-23
Donna Amos	Viper	03:08:30	15	2	WA-4
Leona Merryman	Robbie	03:08:30	15	2	WA-4
Bunny Roberts	Cabro Asil Oro (Orey)	03:08:30	15	2	WA-4
Short Course					
Name	Horse	Time Elapsed	Total Pts	Place	Team #
Anne Marie Franke	Sir Gallant De Bwee	01:55:32	8	1	WA-11
Claudia Aide	Ebony Miss T.Rose (Rosa)	01:55:32	8	1	WA-11
Nathan Schlomer	Easy Cheif's Alliby (Cowboy)	01:55:32	8	1	WA-11
Ron Spalding	Austin	02:09:05	7	2	WA-35
Linda Knutson	Star Flashes Buddy (Buddy)	02:09:05	7	2	WA-35
Cheryl Ahern	Yawkas April Thunder (Yawkas)	02:09:05	7	2	WA-35

## WA - Danville-Georgetown - 4/13/13 - Mgrs: Lisa Hayes/Ross Tillotson

Long Course Name	Horse	Time Elapsed	Total Pts	Place	Team #
Kathy Davis	Ellies Lil FireFeet	02:23:09	16	1	S
Fred Hanson	Whiskey	02:59:43	15	2	WA-16
Samantha-Jo Mattox	Taco	02:59:43	15	2	WA-16
Short Course					
Name	Horse	Time Elapsed	Total Pts	Place	Team #
Linda Morgan	Mistys Golden Eagle (Eagle)	01:28:15	8	1	WA-35
Ron Spalding	Austin	01:28:15	8	1	WA-35
Cheryl Ahern	Yawkas April Thunder (Yawkas)	01:28:15	8	1	WA-35
Linda Knutson	Star Flashes Buddy (Buddy)	01:28:15	8	1	WA-35
Sophia McKee	Jersey	01:46:54	7	2	G
Christine Wuifert	Leroy	01:46:54	7	2	WA-39
Kelly LaFleur	Aggy	01:46:54	7	2	WA-39

## WA - Sahara Creek - 4/27/13 - Mgrs: Donna Amos/Mary Gazaway

Long Course Name	Horse	Time Elapsed	Total Pts	Place	Team #
Jeff Thornton	Fire Storm (Stormy)	03:06:38	16	1	S
Fred Hanson	Whiskey	03:46:11	15	2	WA-16
Samantha-Jo Mattox	Taco	03:46:11	15	2	WA-16
Short Course					
Name	Horse	Time Elapsed	Total Pts	Place	Team #
Linda Knutson	Star Flashes Buddy (Buddy)	02:26:48	8	1	WA-35
Linda Morgan	Mistys Golden Eagle (Eagle)	02:26:48	8	1	WA-35
Cheryl Ahern	Yawkas April Thunder (Yawkas)	02:26:48	8	1	WA-35
Ron Spalding	Austin	02:26:48	8	1	WA-35
Anne Marie Franke	Sir Gallant De Bwee	02:42:03	7	2	G
Susan Sterling-Williams	Trix	02:42:03	7	2	G

## Long Course WA - Sahara Creek - 4/28/13

Name	Horse	Time Elapsed	Total Pts	Place	Team #
Jeff Thornton	Fire Storm (Stormy)	03:39:04	16	1	S
Charles "Chuck" Cowan	MMR Liberty Valor (Liberty)	03:42:55	15	2	G
Theresa Tillotson	Reprint Me Too (Reo)	03:42:55	15	2	G
Short Course					
Name	Horse	Time Elapsed	Total Pts	Place	Team #
Anne Marie Franke	Sir Gallant De Bwee	02:09:21	8	1	S
Sandra Kingshott	Pushers Classic Mocha (Mochie)	02:28:04	7	2	S

## Long Course WA - Green Mt. Horse Camp - 5/11/13 - Mgr: Fred Hanson

Name	Horse	Time Elapsed	Total Pts	Place	Team #
Kathy Davis	Ellies Lil FireFeet	04:01:43	16	1	S
Donna Amos	Viper	05:36:18	14	2	WA-4
Leona Merryman	Robbie	05:36:18	14	2	WA-4
Bunny Roberts	Cabro Asil Oro (Orey)	05:36:18	14	2	WA-4
Short Course					
Name	Horse	Time Elapsed	Total Pts	Place	Team #
Linda Knutson	Star Flashes Buddy (Buddy)	01:53:58	8	1	WA-35
Ron Spalding	Austin	01:53:58	8	1	WA-35
Cheryl Ahern	Yawkas April Thunder (Yawkas)	01:53:58	8	1	WA-35
Lisa Hayes	Rose's Royal Rambler (Royal)	02:35:46	7	2	WA-7
Anne-Marie Rousseau	GE Rifle (Rifle)	02:35:46	7	2	WA-7

## Long Course WA - Green Mt. Horse Camp - 5/12/13

Name	Horse	Time Elapsed	Total Pts	Place	Team #
Donna Amos	Al-Ahmar Sahr Rakkas (Magic)	01:25:23	16	1	WA-4
Leona Merryman	Scandalous Legend (Taz)	01:25:23	16	1	WA-4
Bunny Roberts	Cabro Asil Oro (Orey)	01:25:23	16	1	WA-4
Kathy Davis	Ellies Lil FireFeet	02:26:10	15	2	S
Short Course					
Name	Horse	Time Elapsed	Total Pts	Place	Team #
Linda Knutson	Star Flashes Buddy (Buddy)	01:15:49	8	1	WA-35
Ron Spalding	Austin	01:15:49	8	1	WA-35
Cheryl Ahern	Yawkas April Thunder (Yawkas)	01:15:49	8	1	WA-35
Laura LLuellyn	Natori- 5 Inferno (Fuego)	01:33:32	7	2	S



**Long Course WA - M.T. Pockets Ranch - 6/1/13 - Mgr: Kathy Davis**

Name	Horse	Time Elapsed	Total Pts	Place	Team #
Bunny Roberts	Cabro Asil Oro (Orey)	02:08:45	16	1	WA-4
Leona Merryman	Robbie	02:08:45	16	1	WA-4
Donna Amos	Viper	02:08:45	16	1	WA-4
Jeff Thornton	Fire Storm (Stormy)	02:16:40	15	2	S

Short Course Name	Horse	Time Elapsed	Total Pts	Place	Team #
Karin Mostello	Starbuck	02:09:55	8	1	WA-24
Kathryn Patterson	Celtic Prince (PK)	02:09:55	8	1	WA-24
Linda Knutson	Star Flashes Buddy (Buddy)	02:11:14	7	2	WA-35
Cheryl Ahern	Yawkas April Thunder (Yawkas)	02:11:14	7	2	WA-35
Ron Spalding	Austin	02:11:14	7	2	WA-35

**Long Course WA - M.T. Pockets Ranch - 6/2/13**

Name	Horse	Time Elapsed	Total Pts	Place	Team #
Jeff Thornton	Fire Storm (Stormy)	02:32:44	16	1	S
Leona Merryman	Scandalous Legend (Taz)	03:00:58	15	2	WA-4
Donna Amos	Viper	03:00:58	15	2	WA-4
Bunny Roberts	Cabro Asil Oro (Orey)	03:00:58	15	2	WA-4

Short Course Name	Horse	Time Elapsed	Total Pts	Place	Team #
Ron Spalding	Austin	02:50:40	8	1	WA-35
Linda Knutson	Star Flashes Buddy (Buddy)	02:50:40	8	1	WA-35
Cheryl Ahern	Yawkas April Thunder (Yawkas)	02:50:40	8	1	WA-35
Bryanna Branson	Trig	02:50:40	8	1	G
Karla Valentine	Penalton	04:25:55	7	2	G
Kayla Dugay	Jessie	04:25:55	7	2	G

**Long Course WA - Les Hilde - 6/15/13 - Mgrs: Susan Lessley/Pamela Mitzlaff-Rose**

Name	Horse	Time Elapsed	Total Pts	Place	Team #
Fred Hanson	Whiskey	02:16:24	16	1	WA-16
Samantha-Jo Mattox	Taco	02:16:24	16	1	WA-16
Jennifer Odle	Sea Squirt	02:16:24	16	1	WA-16
Heather Sampson	ROL	02:16:24	16	1	WA-16
David Lewis	Ecstasy	02:42:15	15	2	WA-25
Brandi Miller	B A Ruffled Wrangler (Ruffles)	02:42:15	15	2	WA-25
Connie Hoge	Farah	02:42:15	15	2	WA-25

Short Course Name	Horse	Time Elapsed	Total Pts	Place	Team #
Kelly LaFleur	Aggy	03:17:44	8	1	WA-39
Christine Wuifert	Leroy	03:17:44	8	1	WA-39
Patricia Hall	Rocky	03:34:10	7	2	G
Laura LLuellyn	Natori-Sinferno (Fuego)	03:34:10	7	2	G

**Long Course WA - Les Hilde - 6/16/13**

Name	Horse	Time Elapsed	Total Pts	Place	Team #
Fred Hanson	Whiskey	01:14:27	16	1	WA-16
Samantha-Jo Mattox	Taco	01:14:27	16	1	WA-16
Jennifer Odle	Sea Squirt	01:14:27	16	1	WA-16
Brandi Miller	B A Ruffled Wrangler (Ruffles)	01:41:33	15	2	WA-25
David Lewis	Ecstasy	01:41:33	15	2	WA-25
Connie Hoge	Farah	01:41:33	15	2	WA-25

Short Course Name	Horse	Time Elapsed	Total Pts	Place	Team #
Lisa Hayes	Rose's Royal Rambler (Royal)	01:01:41	8	1	WA-7
Lynn Mazer	Calico Kitty (Kitty)	01:01:41	8	1	WA-7
Susan Sterling Williams	Trix	01:14:35	7	2	G
Vickie Stewart	?	01:14:35	7	2	G

**Long Course WA - Buck Creek - 6/29/13 - Mgrs: Anne Marie Franke/Nathan Schlomer**

Name	Horse	Time Elapsed	Total Pts	Place	Team #
Fred Hanson	Whiskey	01:53:22	16	1	WA-16
Samantha-Jo Mattox	Oz	01:53:22	16	1	WA-16
Leona Merryman	Robbie	01:54:25	15	2	WA-4
Bunny Roberts	Cabro Asil Oro (Orey)	01:54:25	15	2	WA-4
Donna Amos	Viper	01:54:25	15	2	WA-4

Short Course Name	Horse	Time Elapsed	Total Pts	Place	Team #
Linda Knutson	Star Flashes Buddy (Buddy)	01:12:56	8	1	WA-35
Cheryl Ahern	Yawkas April Thunder (Yawkas)	01:12:56	8	1	WA-35
Christine Wuifert	Leroy	01:18:31	7	2	WA-39
Karla Valentine	Jessie	01:18:31	7	2	WA-39
Kelly LaFleur	Aggy	01:18:31	7	2	WA-39

**Long Course WA - Buck Creek - 6/30/13 - Mgrs: Claudia Aide/Nathan Schlomer**

Name	Horse	Time Elapsed	Total Pts	Place	Team #
Leona Merryman	Scandalous Legend (Taz)	02:52:24	16	1	WA-4
Bunny Roberts	Cabro Asil Oro (Orey)	02:52:24	16	1	WA-4
Donna Amos	Al-Ahmar Sihr Rakkas (Magic)	02:52:24	16	1	WA-4
Fred Hanson	Whiskey	03:39:28	14	2	WA-16
Samantha-Jo Mattox	Taco	03:39:28	14	2	WA-16

Short Course Name	Horse	Time Elapsed	Total Pts	Place	Team #
Linda Knutson	Star Flashes Buddy (Buddy)	02:06:41	8	1	WA-35
Cheryl Ahern	Yawkas April Thunder (Yawkas)	02:06:41	8	1	WA-35
Sherry Brown	Chernuska (Nicki)	02:09:20	7	2	WA-42
Alex Brown	Crystal (D/A)	02:09:20	7	2	WA-42
Eric Brown	Red Hot Sizzlin Fire (Fire)	02:09:20	7	2	WA-42

**Long Course WA - Elbe Hills - 7/13/13 - Mgrs: Cody Jacobs/Sandra Kingshott**

Name	Horse	Time Elapsed	Total Pts	Place	Team #
Bunny Roberts	Cabro Asil Oro (Orey)	02:55:21	16	1	WA-4
Donna Amos	Al-Ahmar Sihr Rakkas (Magic)	02:55:21	16	1	WA-4
Leona Merryman	Robbie	02:55:21	16	1	WA-4
Patricia Richmond	Shadow	02:55:21	16	1	WA-4
Samantha-Jo Mattox	Taco	03:10:21	15	2	WA-16

Short Course Name	Horse	Time Elapsed	Total Pts	Place	Team #
Susan Lessley	Rider's Proud Delight (Missy B)	01:54:16	8	1	WA-26
Pamela Mitzlaff-Rose	Harley	01:54:16	8	1	WA-26
Christine Wuifert	Leroy	01:54:26	7	2	WA-39
Karla Valentine	Jessie	01:54:26	7	2	WA-39
Becky Miner	Bo	01:54:26	7	2	G

**Long Course WA - Elbe Hills - 7/14/13**

Name	Horse	Time Elapsed	Total Pts	Place	Team #
Donna Amos	Viper	02:10:50	16	1	WA-4
Leona Merryman	Scandalous Legend (Taz)	02:10:50	16	1	WA-4
Patricia Richmond	Shadow	02:10:50	16	1	WA-4
Jeff Thornton	Fire Storm (Stormy)	02:18:58	15	2	S

Short Course Name	Horse	Time Elapsed	Total Pts	Place	Team #
Pattie Van Winkle	Comets Flame	01:27:21	8	1	G
Ragina Hernandez	Poppy	01:27:21	8	1	G
Sharon Delaney	Twist	01:27:21	8	1	G
Michael Gilla	?	01:27:21	8	1	G
Crystal Buckley	Spirit	01:27:21	8	1	G
Susan Lessley	Rider's Proud Delight (Missy B)	01:49:15	7	2	WA-26
Pamela Mitzlaff-Rose	Harley	01:49:15	7	2	WA-26
Crystal Welch	Danger	01:49:15	7	2	G



**WA - Fall Creek - 7/27/13 - Mgrs: Patricia Richmond/Bunny Roberts**

Long Course Name	Horse	Time Elapsed	Total Pts	Place	Team #
Fred Hanson	Whiskey	03:07:24	16	1	WA-16
Samantha-Jo Mattox	Taco	03:07:24	16	1	WA-16
Jennifer Odle	Tezero's Warpony (Oreo)	03:07:24	16	1	WA-16
Savannah Odle	Sea Squirt	03:07:24	16	1	WA-16
Donna Amos	Viper	05:09:28	14	2	WA-4
Short Course Name	Horse	Time Elapsed	Total Pts	Place	Team #
Linda Knutson	Star Flashes Buddy (Buddy)	02:07:31	8	1	S
Lynn Mazer	Calico Kitty (Kitty)	02:22:06	7	2	WA-7
Lisa Hayes	Rose's Royal Rambler (Royal)	02:22:06	7	2	WA-7

**WA - Fall Creek - 7/28/13**

Long Course Name	Horse	Time Elapsed	Total Pts	Place	Team #
Fred Hanson	Whiskey	02:31:06	16	1	WA-16
Samantha-Jo Mattox	Taco	02:31:06	16	1	WA-16
Jennifer Odle	Tezero's Warpony (Oreo)	02:31:06	16	1	WA-16
Donna Amos	Viper	03:34:46	15	2	WA-4
Leona Merryman	Scandalous Legend (Taz)	03:34:46	15	2	WA-4
Short Course Name	Horse	Time Elapsed	Total Pts	Place	Team #
Kathryn Patterson	Blue Hayes (Omaha)	02:16:14	8	1	G
Susan Sterling-Williams	Trix	02:16:14	8	1	G
Nathan Schlomer	Easy Cheif's Alliby (Cowboy)	02:20:08	7	2	S

**WA - Cody Horse Camp - 8/10/13 - Mgrs: Angela & Doug Hall**

Long Course Name	Horse	Time Elapsed	Total Pts	Place	Team #
Richard Worrell	Buck	06:37:47	16	1	G
Laura LLuellyn	Natori- 5 Inferno (Fuego)	06:37:47	16	1	G
Patricia Richmond	Shadow	07:49:14	15	2	WA-4
Leona Merryman	Scandalous Legend (Taz)	07:49:14	15	2	WA-4
Short Course Name	Horse	Time Elapsed	Total Pts	Place	Team #
Linda Knutson	Star Flashes Buddy (Buddy)	04:55:33	8	1	WA-35
Cheryl Ahern	Yawkas April Thunder (Yawkas)	04:55:33	8	1	WA-35

**WA - Cody Horse Camp - 8/11/13 - Mgrs: Angela & Erica Hall**

Long Course Name	Horse	Time Elapsed	Total Pts	Place	Team #
Patricia Richmond	Shadow	04:37:44	16	1	WA-4
Leona Merryman	Robbie	04:37:44	16	1	WA-4
Fred Hanson	Oz	04:26:14	13	2	S
Short Course Name	Horse	Time Elapsed	Total Pts	Place	Team #
Linda Knutson	Star Flashes Buddy (Buddy)	03:54:22	8	1	WA-35
Cheryl Ahern	Yawkas April Thunder (Yawkas)	03:54:22	8	1	WA-35

**WA - Kitsap Peninsula - Green Mountain - 8/24 - 8/25/13**

Ride results not available at press time.

**WA - Rimrock Lake - 9/14/13 - Mgrs: David Kingshott/Heidi Schwiger**

Long Course Name	Horse	Time Elapsed	Total Pts	Place	Team #
Donna Amos	Viper	04:30:15	15	1	WA-4
Bunny Roberts	Cabro Asil Oro (Orey)	04:30:15	15	1	WA-4
Charles "Chuck" Cowan	MMR Tuff Balatorie (Blazer)	04:30:15	15	1	G
Fred Hanson	Whiskey	04:44:40	14	2	S
Short Course Name	Horse	Time Elapsed	Total Pts	Place	Team #
George Hight	?	03:44:00	4	1	G
Heather Hight	?	03:44:00	4	1	G

**WA - Rimrock Lake - 9/15/13**

Long Course Name	Horse	Time Elapsed	Total Pts	Place	Team #
Fred Hanson	Whiskey	02:22:19	16	1	S
Donna Amos	Viper	02:36:30	15	2	WA-4
Bunny Roberts	Cabro Asil Oro (Orey)	02:36:30	15	2	WA-4

**WA - Mt. Adams - 9/28/13 - Mgrs: Donna Amos/Anne-Marie Rousseau**

Long Course Name	Horse	Time Elapsed	Total Pts	Place	Team #
Jeff Thornton	Fire Storm (Stormy)	03:55:00	16	1	S
Samantha-Jo Mattox	Taco	04:48:34	15	2	WA-16
Fred Hanson	Whiskey	04:48:34	15	2	WA-16

**Short Course**

Name	Horse	Time Elapsed	Total Pts	Place	Team #
Anne Marie Franke	Sir Gallant De Bwee	03:32:32	8	1	WA-11
Nathan Schlomer	Easy Cheif's Alliby (Cowboy)	03:32:32	8	1	WA-11
Linda Morgan	Mistys Golden Eagle (Eagle)	03:38:21	7	2	WA-35
Cheryl Ahern	Yawkas April Thunder (Yawkas)	03:38:21	7	2	WA-35
Ron Spalding	Austin	03:38:21	7	2	WA-35

**WA - Mt. Adams - 9/29/13**

Long Course Name	Horse	Time Elapsed	Total Pts	Place	Team #
Charles "Chuck" Cowan	MMR Tuff Balatorie (Blazer)	02:46:04	16	1	S
Leona Merryman	Robbie	04:02:56	15	2	S

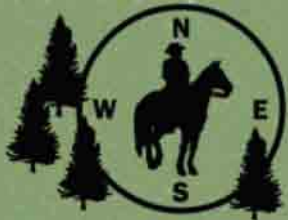
**Short Course**

Name	Horse	Time Elapsed	Total Pts	Place	Team #
Linda Knutson	Star Flashes Buddy (Buddy)	01:03:21	5	1	S



Best wishes for a speedy recovery go out to long-time CMO member Noella Navarra, who recently suffered a stroke.





National Association of  
Competitive Mounted Orienteering  
"The Thinking Horse Sport"

**Competitive Mounted Orienteering (CMO)** is a safe, fun equine activity for all riders. Dubbed "The Thinking Horse Sport", CMO is similar to a mounted treasure-hunt, which tests your horsemanship; your map-reading ability; and your compass-skills – all while having great fun with your horse! The object of the sport, which is sanctioned by the National Association of Competitive Mounted Orienteering (NACMO), is to ride out as an individual or a team, on a prescribed course and find as many hidden markers as you can, in the shortest amount of time.

Riders travel at their own pace, finding markers in any order. While speed can be key, CMO is definitely not a horse-race. Finding the markers is more important than speed, and often the fastest riders rush past landmarks only to lose time backtracking.

CMO is great fun with a fantastic group of folks! All riders and all types of equines (minimum 3 years old) are welcome.

NACMO Meadow Muffin  
attn: Colleen Cathcart  
10093 North 1750 Avenue  
Geneseo, IL 61254-8926



## MEADOW MUFFIN

Quarterly Newsletter of the National Association of Competitive Mounted Orienteering

The Meadow Muffin is the quarterly publication of the National Association of Competitive Mounted Orienteering. The newsletter is distributed electronically to members whose email addresses are on file, and mailed to members who are unable to receive it electronically. In addition, the newsletter may be downloaded from the NACMO website at: [www.NACMO.org](http://www.NACMO.org). Please notify your state director if you are subscribed to The Meadow Muffin but are not receiving it.

NACMO members are encouraged to submit articles that may be of interest to other members, as well as photographs and write-ups on rides which they have managed, or in which they have participated.

Please send your submissions to the editor by email at:

[TheMeadowMuffin@gmail.com](mailto:TheMeadowMuffin@gmail.com)

or via "snail mail" to:

The Meadow Muffin  
10093 North 1750 Avenue  
Geneseo, IL 61254-8926